

Southeastern Wisconsin **Regional Planning Commission**



2024 Review & Update of VISION 2050

Regional Land Use and Transportation Advisory Committees
August 24, 2023

What is VISION 2050?



- Region's long-range land use and transportation plan
- Makes recommendations to local and State government regarding land development and transportation
- Outlook to the year 2050

VISION 2050 Refresher

- ❑ Preserve primary environmental corridors and most productive farmland
- ❑ Encourage more compact development (TOD, walkable neighborhoods)
- ❑ Significantly improve and expand public transit
- ❑ Enhance the bicycle and pedestrian network and incorporate complete streets concepts
- ❑ Keep major streets in a state of good repair
- ❑ Strategically add capacity on congested roadways



VISION 2050: A “Living” Plan

- ❑ Originally adopted in June 2016
- ❑ Amended three times
- ❑ Completed first “interim” review and update in June 2020
- ❑ Need to prepare another review and update by June 2024
- ❑ Major update will be initiated ~2026



Goals of Committee Meeting

- ❑ Review initial information for 2024 Review and Update and approve for public comment in fall
 - Plan recommendations and implementation to date
 - Plan forecasts
 - Transportation system performance
- ❑ Initial input on key data and trends to consider as VISION 2050 is updated

2024 Review & Update Process

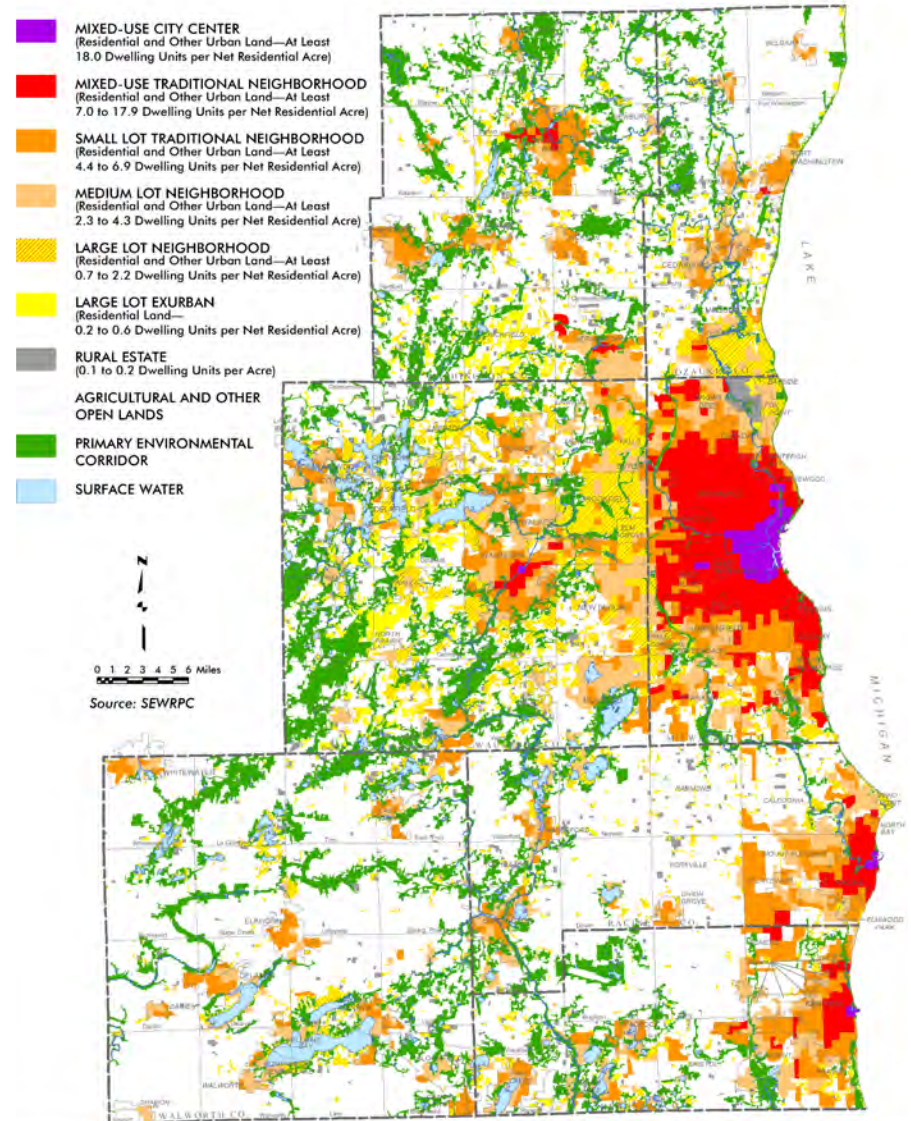
- ❑ **August - October 2023**
Review Background Information and Gather Input
 - Advisory Committee Meeting 1
 - Public and Stakeholder Involvement Round 1
- ❑ **November 2023 - February 2024**
Develop and Review Draft VISION 2050 Updates
 - Advisory Committee Meeting 2
 - Public and Stakeholder Involvement Round 2
- ❑ **March - April 2024**
Approve Revisions to VISION 2050 and Finalize Report
 - Advisory Committee Meeting 3
- ❑ **May - June 2024**
Adopt VISION 2050 Update

2024 Review & Update Elements

- ❑ Review of VISION 2050 Recommendations and Implementation to Date
- ❑ Review of VISION 2050 Forecasts
- ❑ Review of Transportation System Performance
- ❑ Updated VISION 2050 Recommendations
- ❑ Updated Financial Analysis
- ❑ Updated Equity Analysis
- ❑ Review of Targets for National Performance Measures
- ❑ Updated Milwaukee Metro Area Peer Comparison

Land Use Overview

- Focus new urban development in urban centers
- Increase density and provide a mix of housing types and uses
- Preserve primary environmental corridors and agricultural land



Map last updated June 2020

Land Use Implementation

New Housing Units,
2010-2022

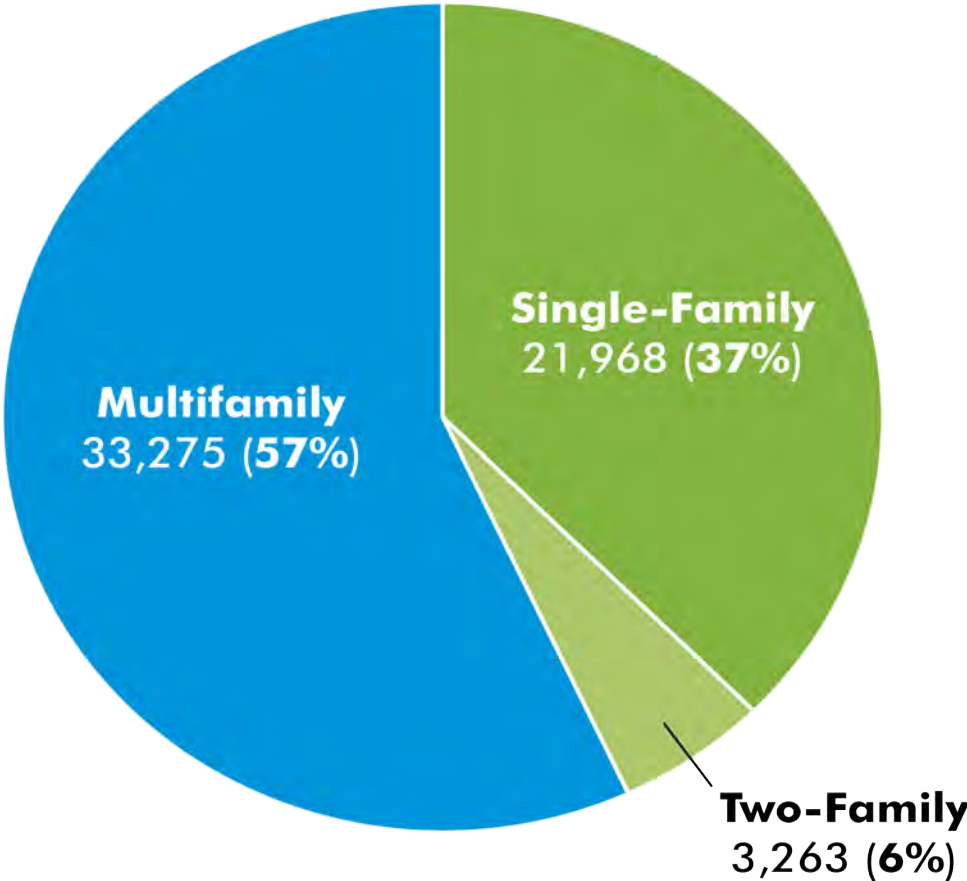


Figure last updated August 7, 2023

Land Use Implementation

Residential Lots Created, 2010-2022

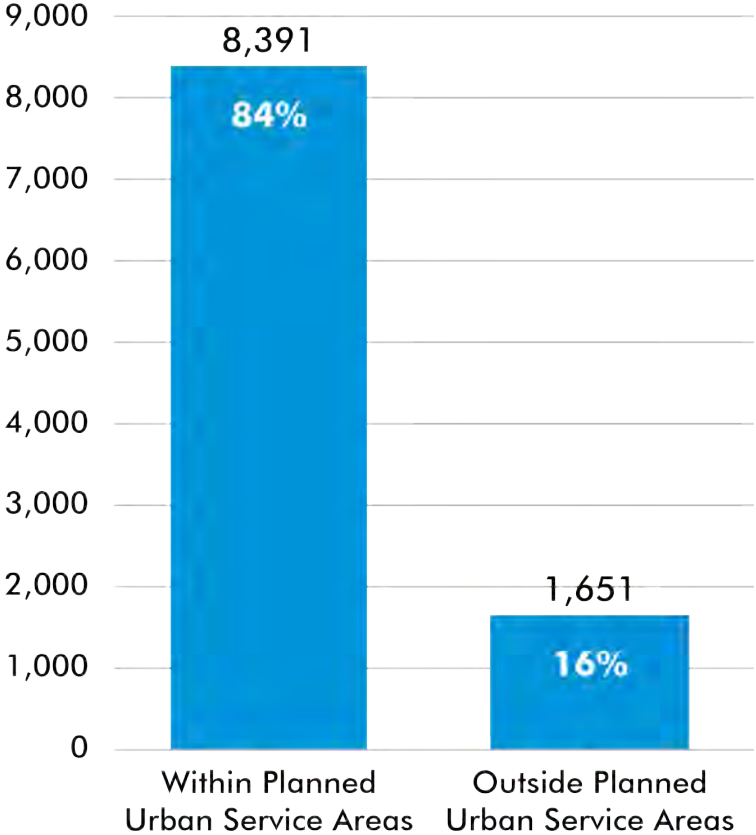


Figure last updated August 7, 2023

Single-Family Lot Size in Sewered Areas, 2010-2022

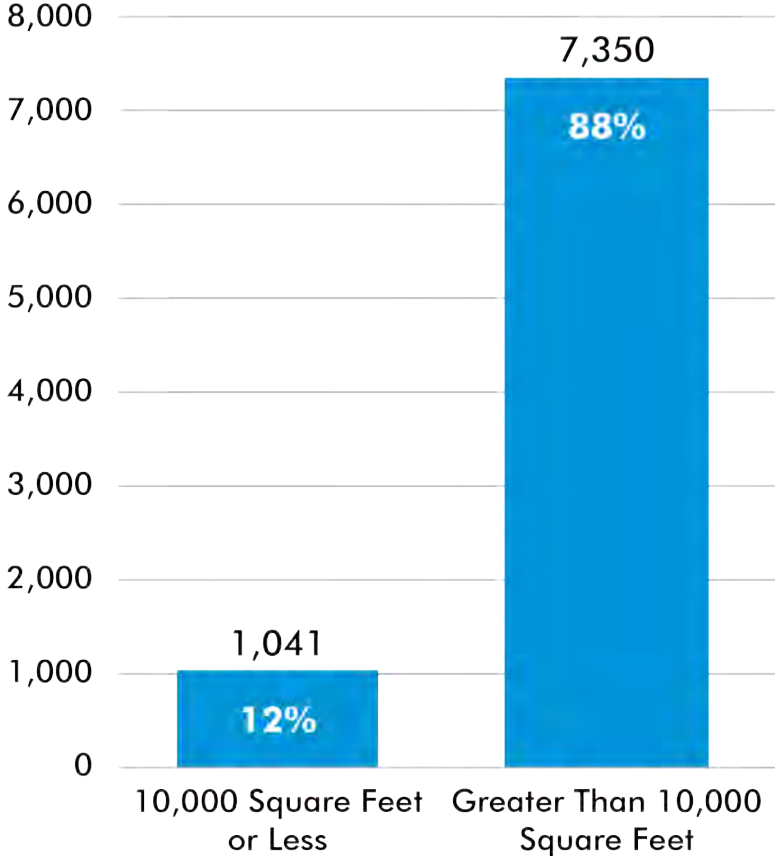


Figure last updated August 7, 2023

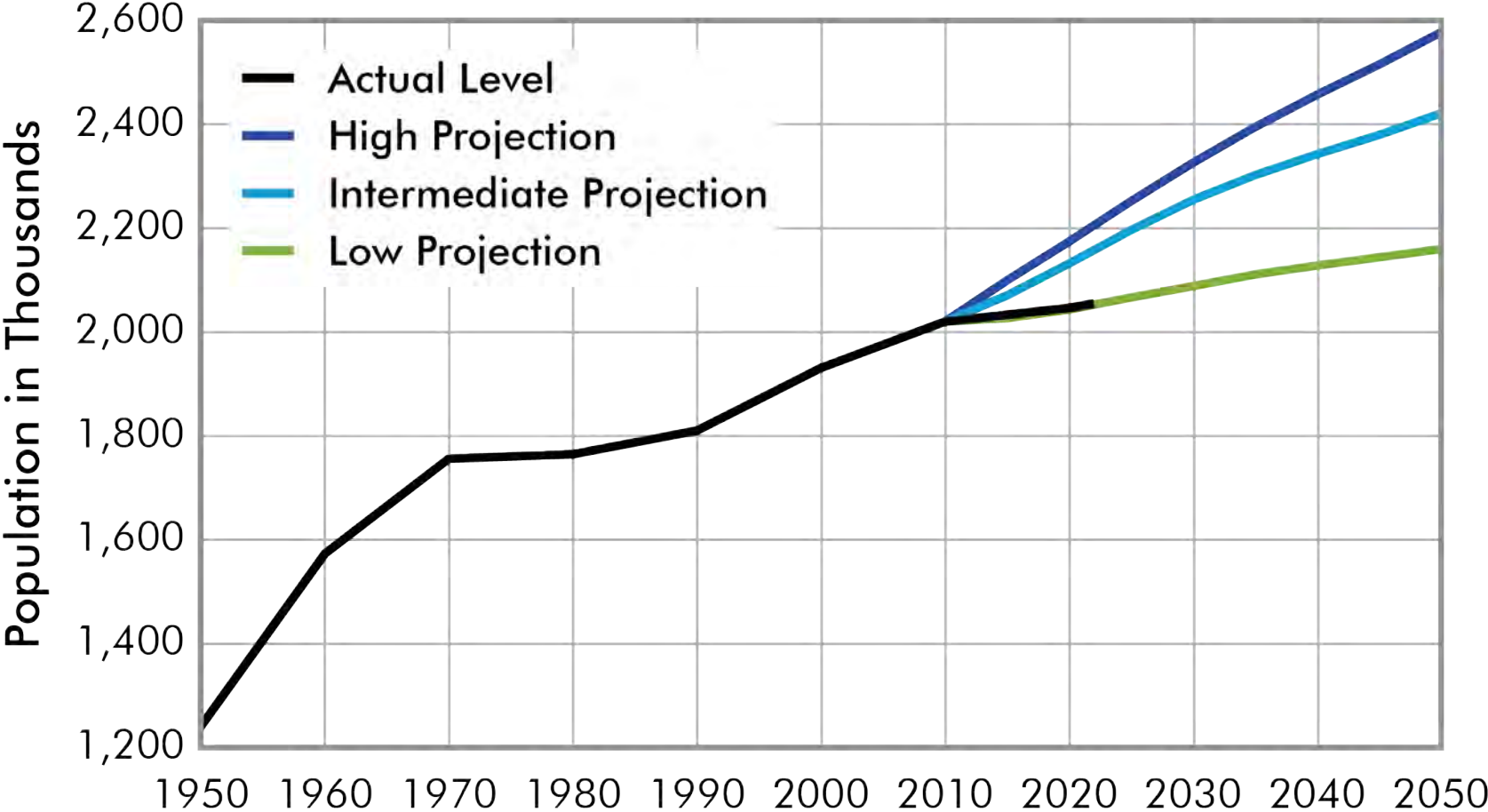
Land Use Implementation

Other notable activity:

- ❑ About 95% of Region's primary environmental corridors now protected
- ❑ TOD potential around stations for The HOP and CONNECT 1 line
- ❑ Commission preparing Regional Food System Plan
- ❑ Milwaukee Climate and Equity Plan completed

Population Forecasts

Population Forecasts



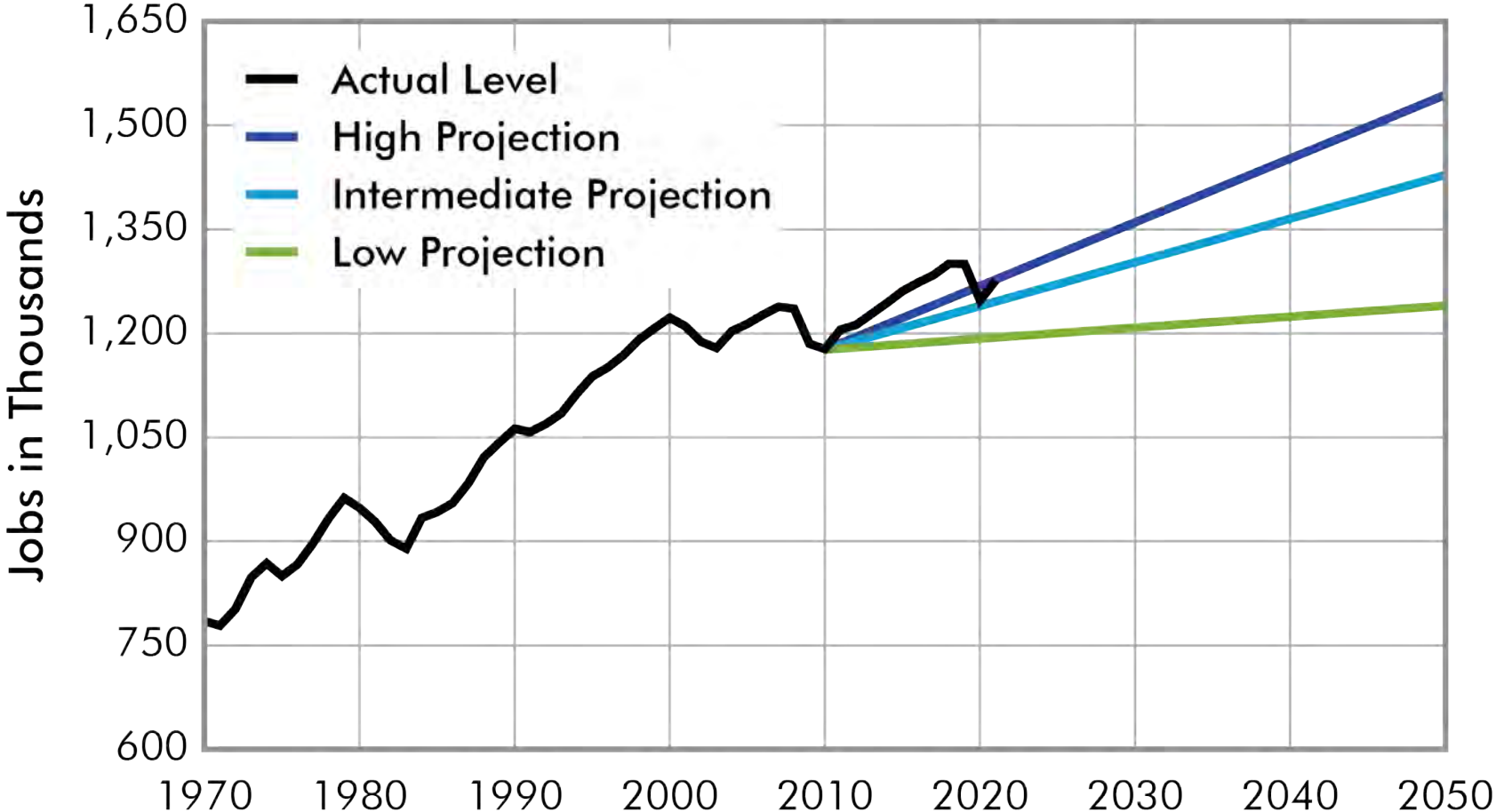
Source: U.S. Bureau of the Census and SEWRPC

Figure last updated August 7, 2023



Employment Forecasts

Employment Forecasts



Note: Jobs represent filled positions.
Source: U.S. Bureau of Economic Analysis and SEWRPC
Figure last updated August 14, 2023



Transportation Overview



Transit



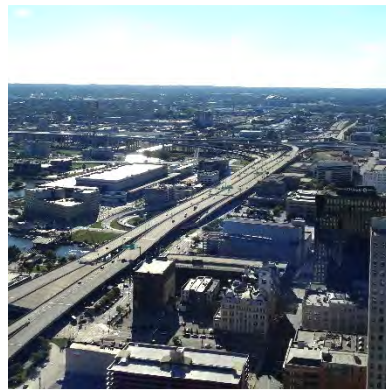
Bike/Ped



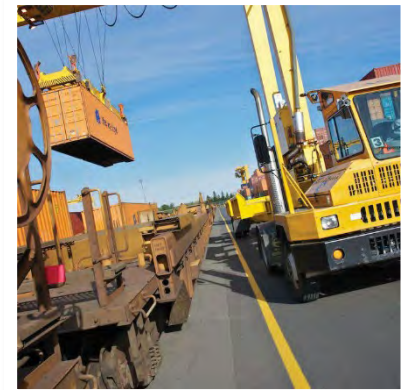
TSM



TDM



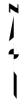
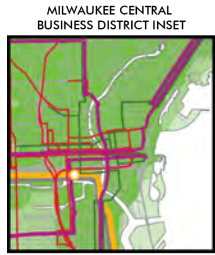
Highways



Freight

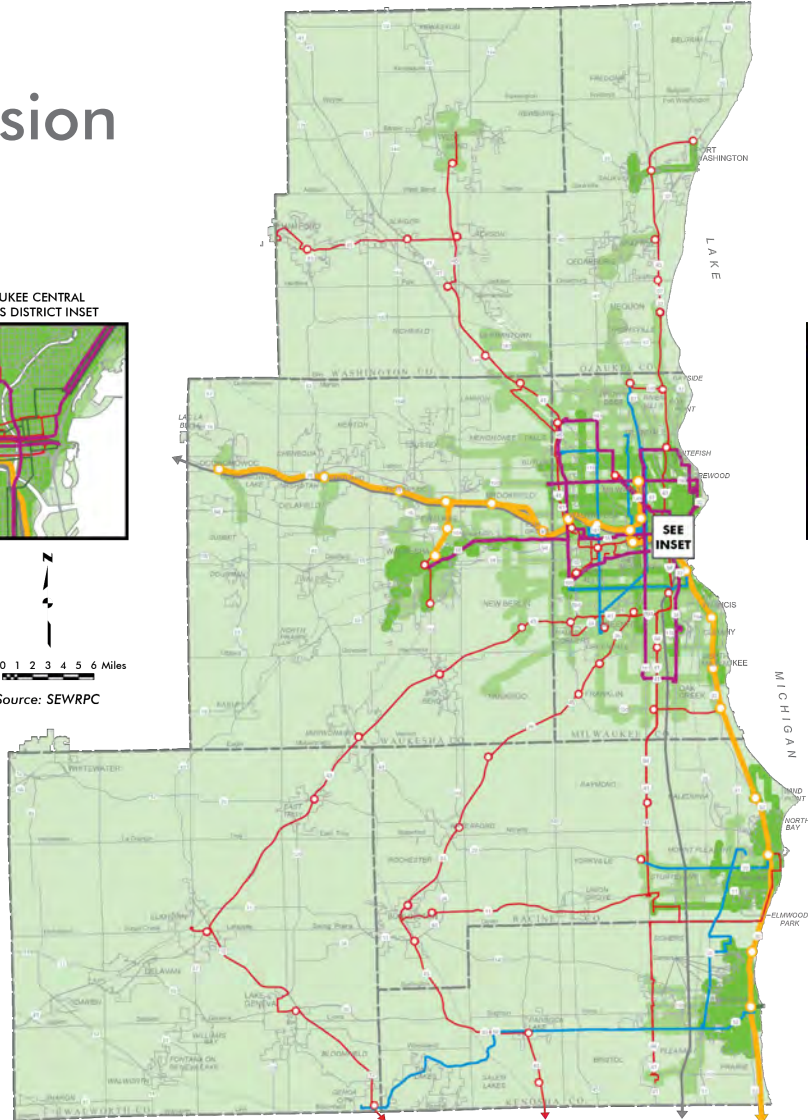
Public Transit Overview

Vision



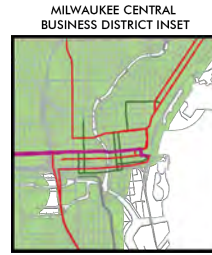
0 1 2 3 4 5 6 Miles

Source: SEWRPC



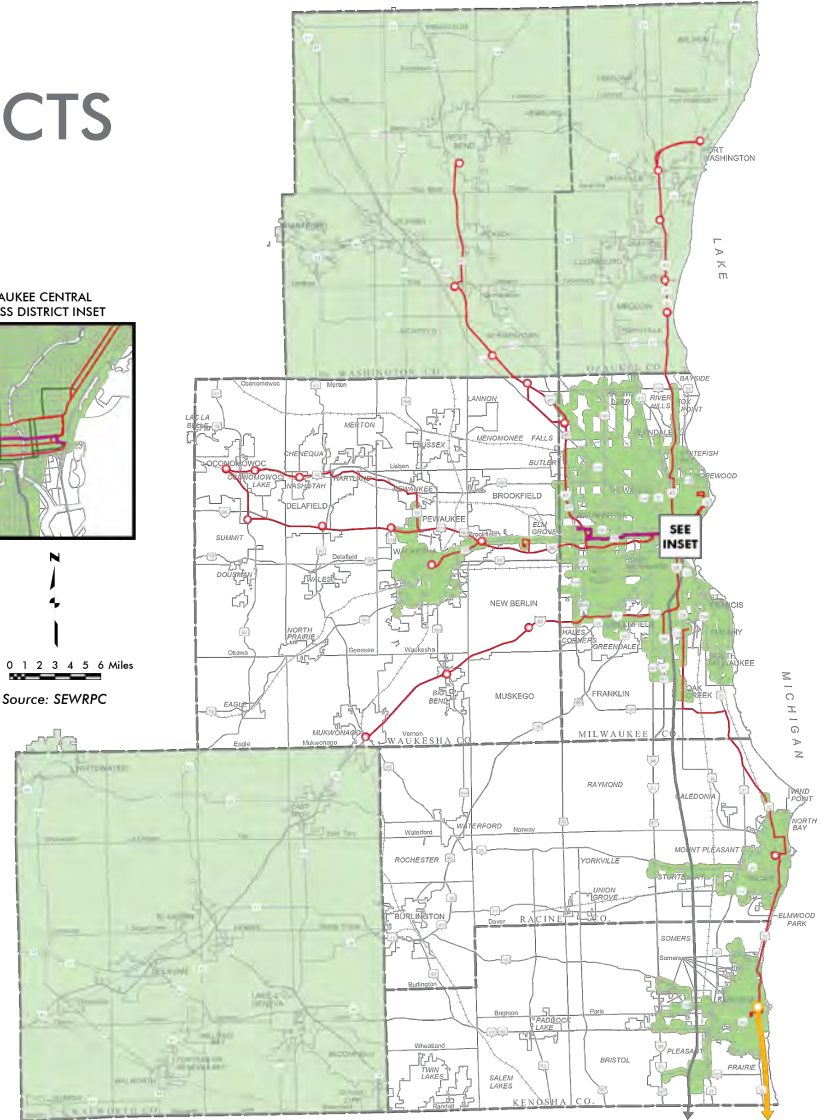
Map last updated June 2020

FCTS



0 1 2 3 4 5 6 Miles

Source: SEWRPC



Map last updated June 2020

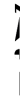
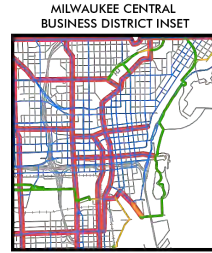
Bicycle & Pedestrian Overview



BICYCLE FACILITIES

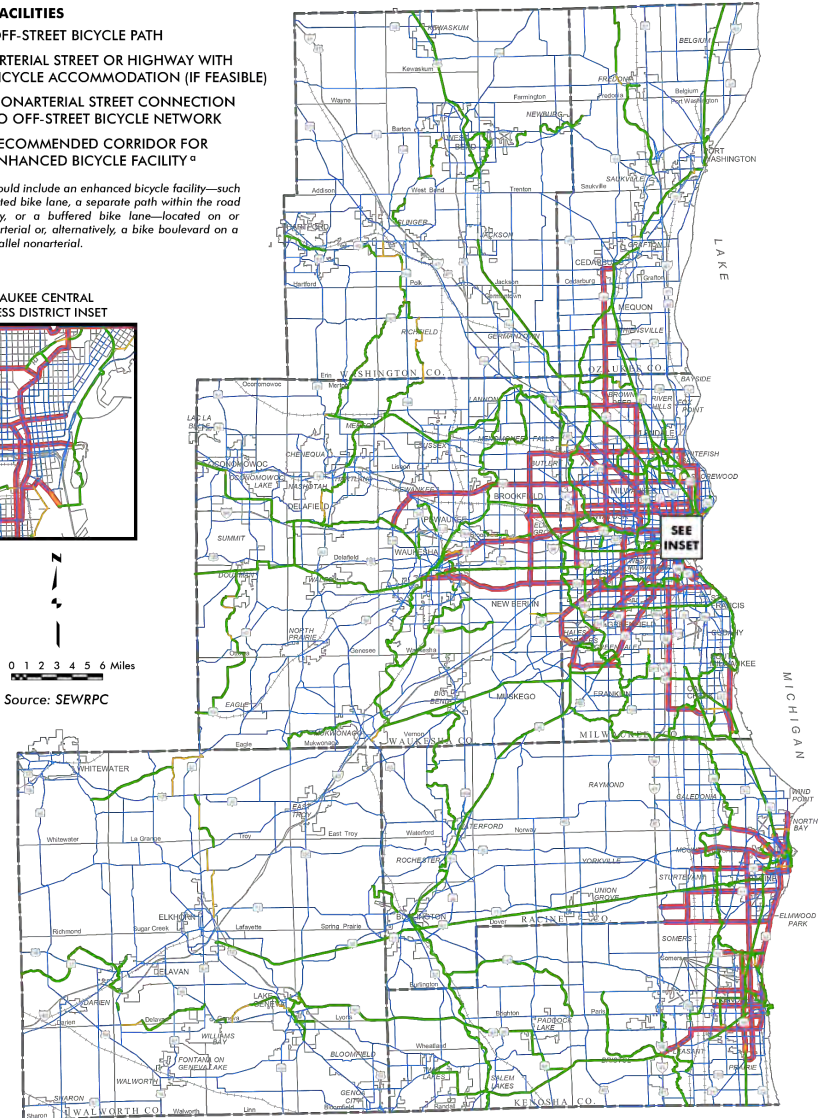
- OFF-STREET BICYCLE PATH
- ARTERIAL STREET OR HIGHWAY WITH BICYCLE ACCOMMODATION (IF FEASIBLE)
- NONARTERIAL STREET CONNECTION TO OFF-STREET BICYCLE NETWORK
- RECOMMENDED CORRIDOR FOR ENHANCED BICYCLE FACILITY^a

^a Corridor would include an enhanced bicycle facility—such as a protected bike lane, a separate path within the road right-of-way, or a buffered bike lane—located on or along an arterial or, alternatively, a bike boulevard on a nearby parallel nonarterial.



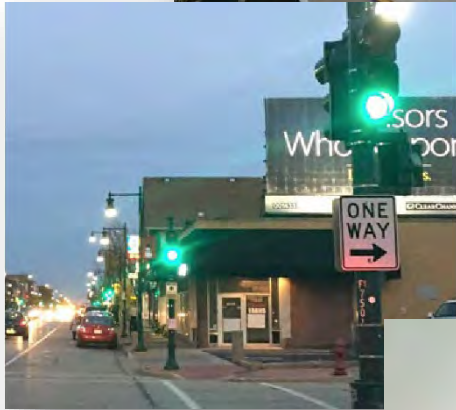
0 1 2 3 4 5 6 Miles

Source: SEWRPC

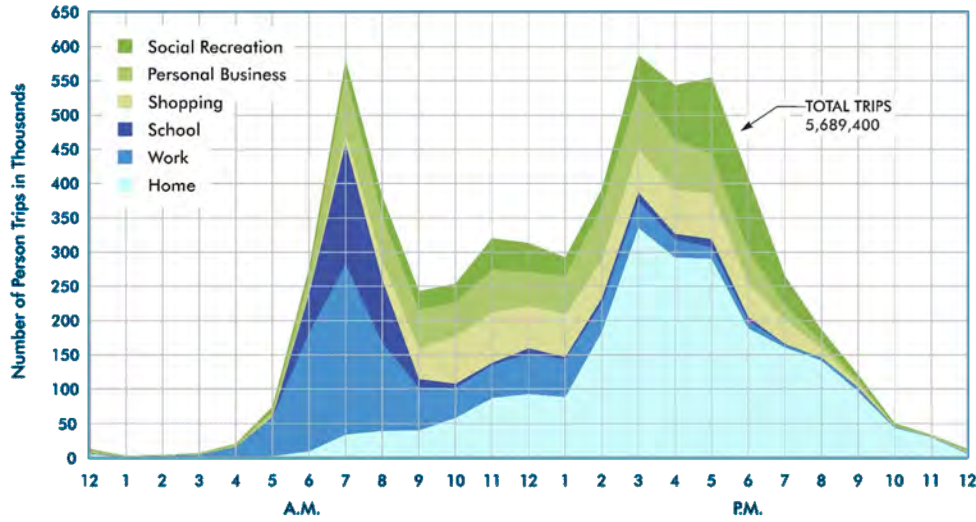


Map last updated June 2020

TSM Overview



TDM Overview

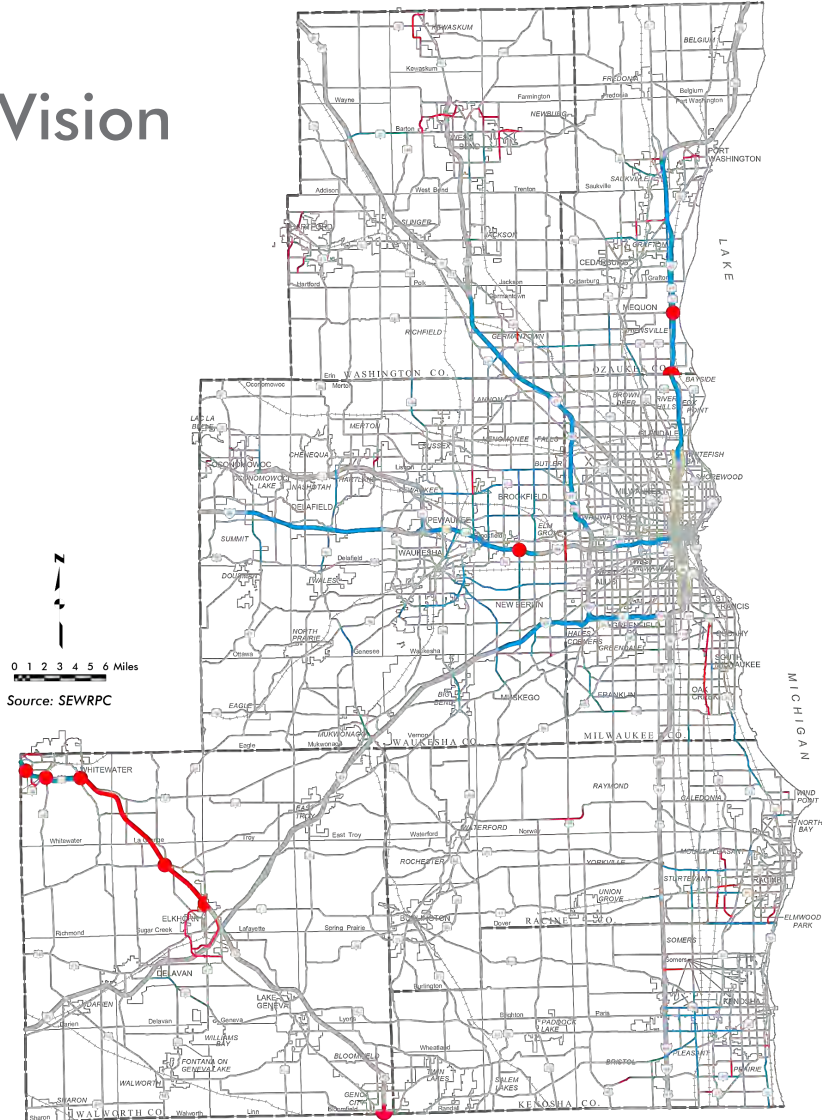


commutewise

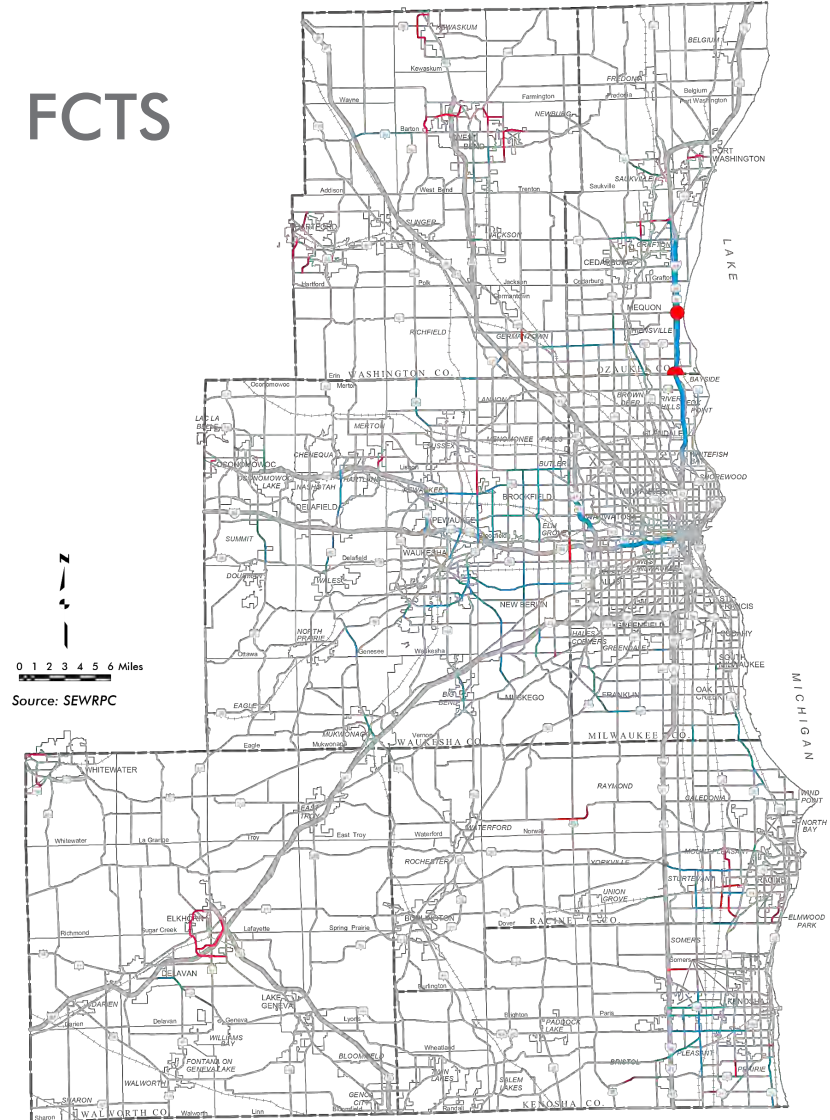


Streets & Highways Overview

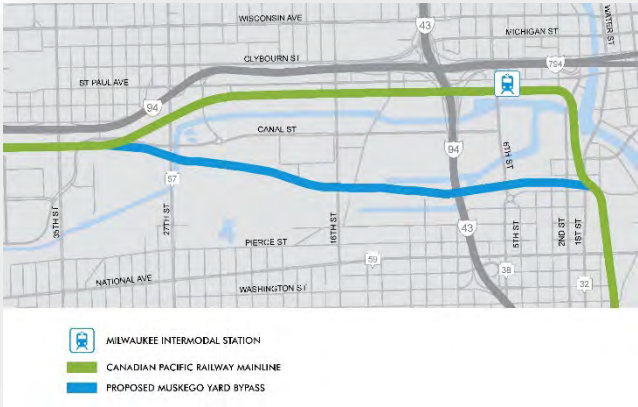
Vision



FCTS

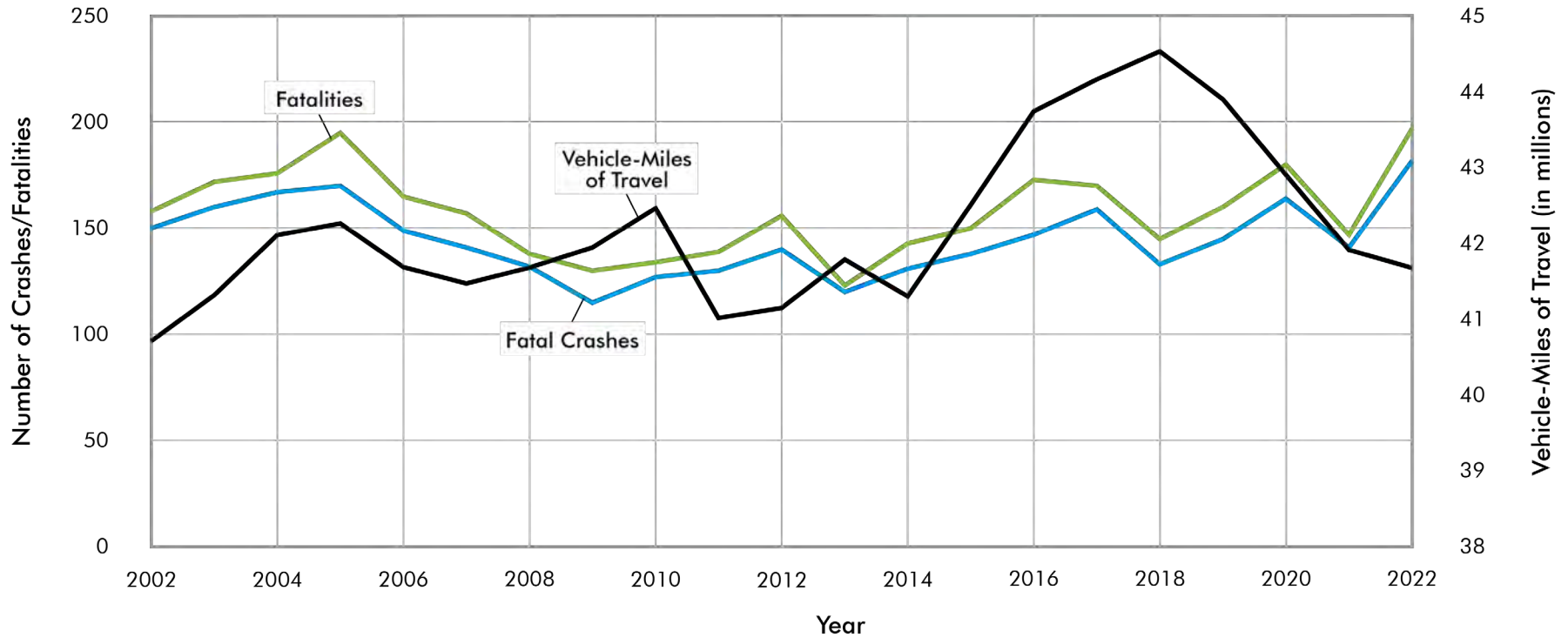


Freight Overview



Streets & Highways Trends

Fatal Vehicular Crashes and Fatalities Reported

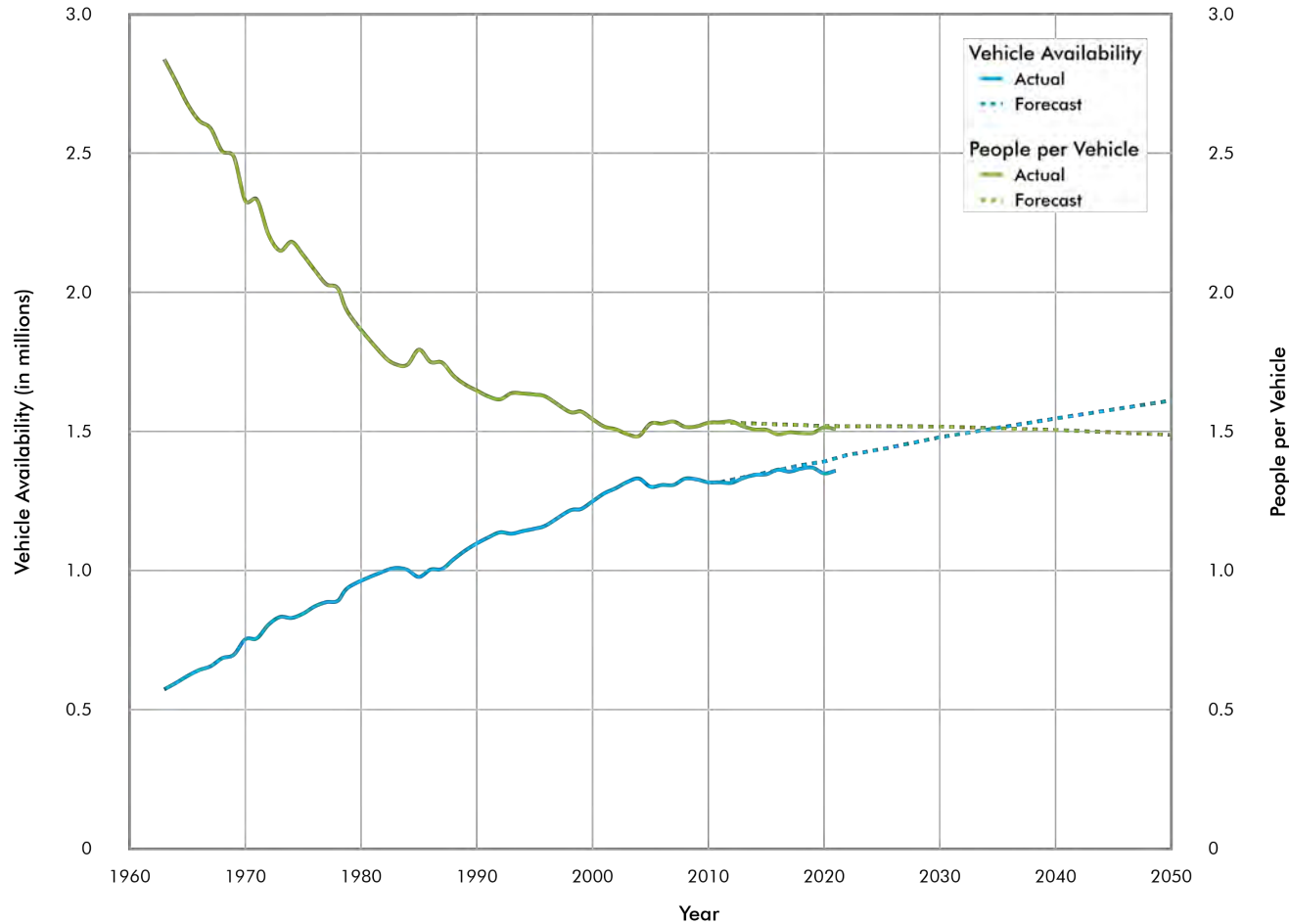


Source: Wisconsin Traffic Operations and Safety Laboratory and SEWRPC

Figure last updated August 11, 2023

Vehicle Availability Forecasts

Vehicle Availability



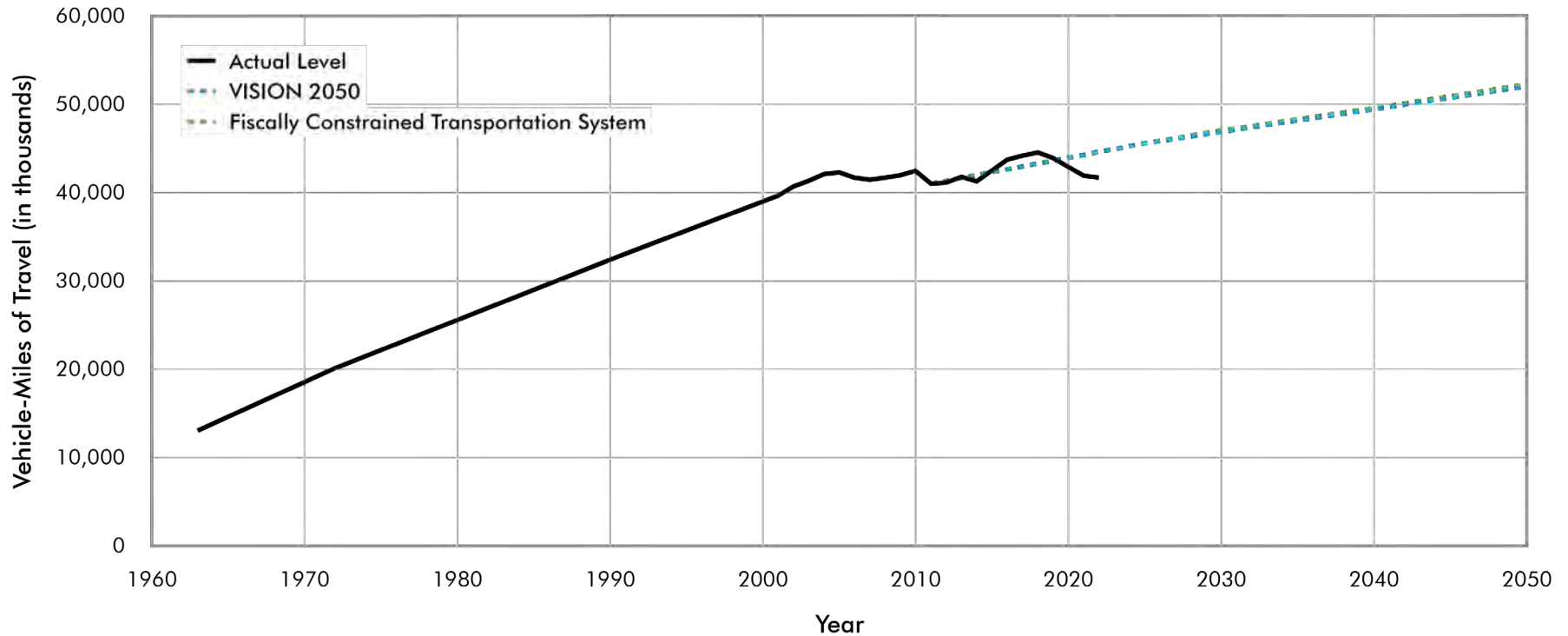
Note: Vehicle availability includes both personal and company-owned vehicles that can be used for personal travel purposes.

Source: SEWRPC

Figure last updated August 14, 2023

VMT Forecasts

Arterial Vehicle-Miles of Travel on an Average Weekday



Source: Wisconsin Department of Transportation and SEWRPC

Figure last updated August 14, 2023

Next Steps

- ❑ **September/October: First Round of Public Involvement**
 - Initial input prior to staff preparing draft 2024 plan update
- ❑ **December/January: Meeting of Advisory Committees**
 - Review public comments and draft 2024 plan update
- ❑ **February: Second Round of Public Involvement**
 - Input on draft 2024 plan update, including updated financial and equity analyses
- ❑ **March: Meeting of Advisory Committees**
 - Review public comments and approve 2024 plan update
- ❑ **June: Commission adoption of 2024 plan update**