

# INTRO TO THE BLUEMOUND ROAD TRANSIT ENHANCEMENT STUDY

Waukesha County & SEWRPC



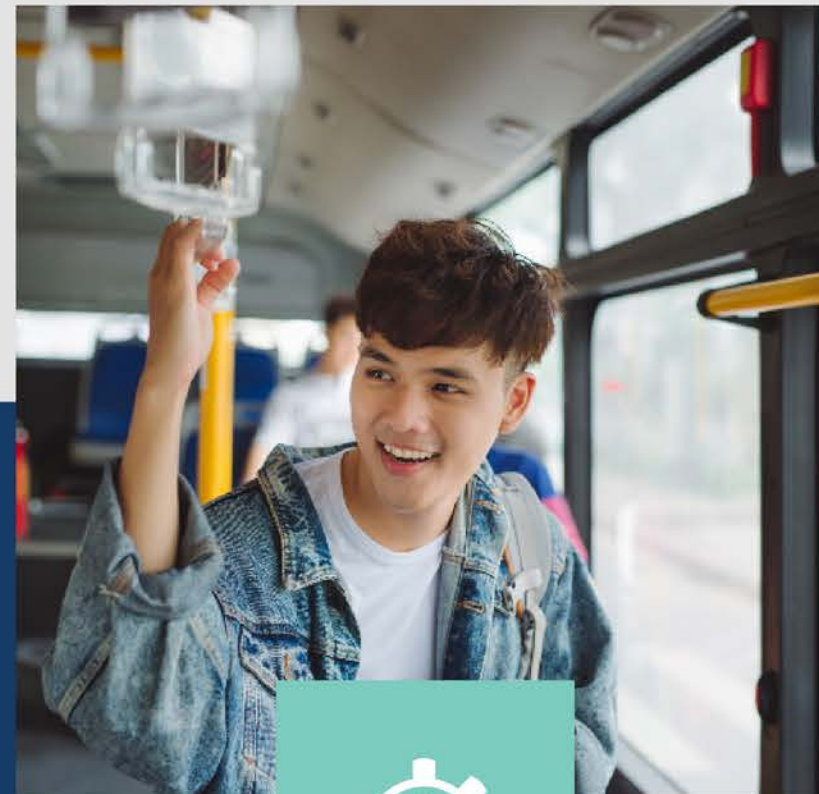
March 2023

# ABOUT THE STUDY

This study is analyzing options for transit improvements along Bluemound Road from the downtown Waukesha Transit Center to the Milwaukee Regional Medical Center (which will be served starting in June 2023). Coupled with a connection to Milwaukee's new bus rapid transit service, this study is intended to explore options for transit enhancements that could help attract more riders and provide faster, more convenient access to jobs in the corridor. The study will include recommendations relating to:



Route, Stop Locations,  
and Stop Amenities



Bus Frequency and  
Running Times



Pedestrian  
Improvements



Expanding Bus-  
Only Lanes

# LEARN MORE AND SHARE YOUR FEEDBACK TODAY:

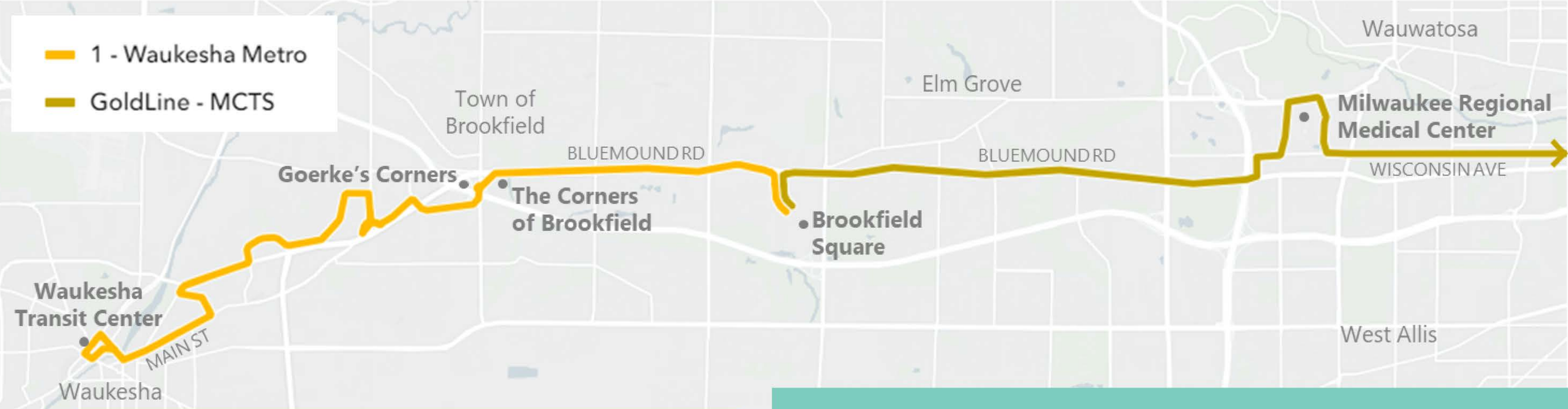


Materials posted on this website are intended to allow the public to learn more and share feedback on the following topics:

- Draft recommendations
- Ridership forecasts
- Cost estimates

# EXISTING ROUTES ALONG BLUEMOUND ROAD

TODAY



**Waukesha Metro**

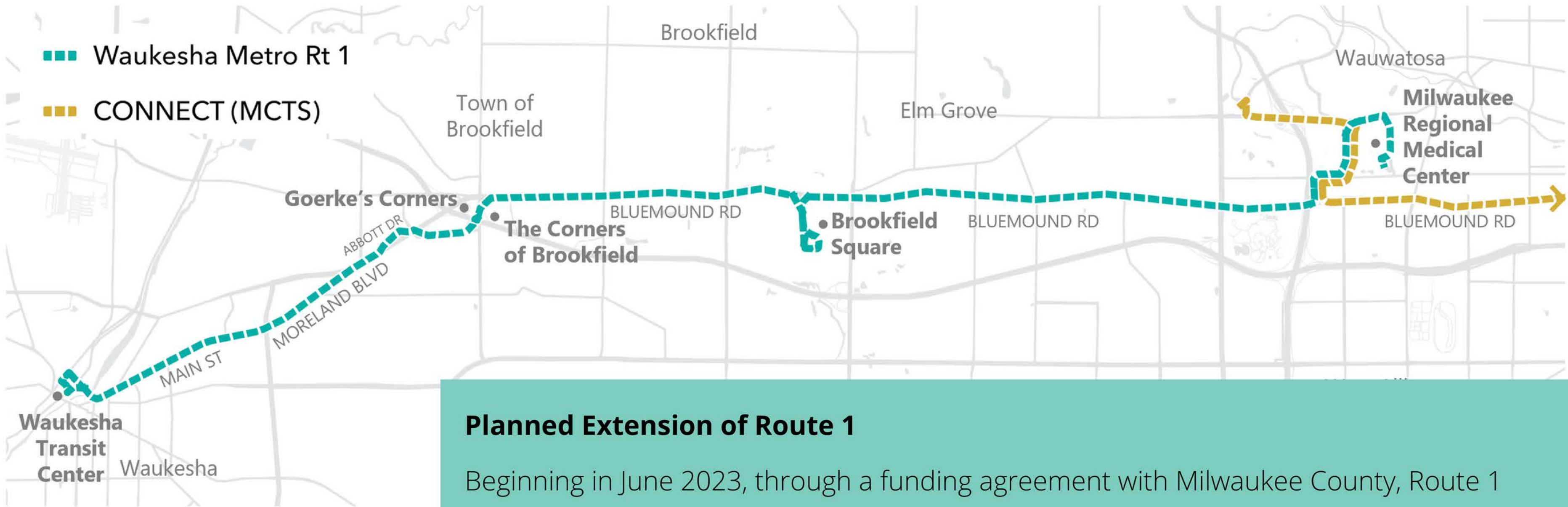
With support from Waukesha County, Waukesha Metro operates Route 1 between the downtown Waukesha Transit Center and Brookfield Square. The route runs approximately every 35 minutes from 5:35 a.m. to 10:40 p.m. during the week with slightly more limited hours on the weekend.

**Milwaukee County Transit System (MCTS)**

The MCTS GoldLine serves the corridor east of Brookfield Square. The route travels east to downtown Milwaukee and then North to the University of Wisconsin Milwaukee.

# PLANNED CHANGES

JUNE 2023



## Planned Extension of Route 1

Beginning in June 2023, through a funding agreement with Milwaukee County, Route 1 will see increased frequency and extend to the Milwaukee Regional Medical Center—allowing for an easy transfer to the new MCTS CONNECT bus rapid transit line.

## WHY

# BENEFITS OF ENHANCED TRANSIT

### ✓ **Mobility**

Improved route frequency, expanded service hours, and fewer stops, along with other improvements, would make transit in the corridor faster and more convenient.

### ✓ **Workforce Connections**

Improving transit in the corridor could broaden the available workforce by offering a convenient and cost-effective means of commuting to jobs along Bluemound Road. This includes extending service hours to align with shift times and streamlining transfers for faster travel.

### ✓ **Safety, Dignity, and Comfort**

Improving bus stops and pedestrian connections would make the journey to and from transit safer and more comfortable.

