

REGIONAL PLANNING NEWS

A publication of the **Southeastern Wisconsin Regional Planning Commission**



Kenosha, WI
Credit: Commission Staff, January 2021

Volume 12 • Issue 1 • March 2025



FIND US WITH E-NEWS!

Sign up to receive this newsletter by email at sewrpc.org/news.



Southeastern Wisconsin Regional Planning Commission

commutewise

Discover alternatives to driving alone with CommuteWISE!

Visit connect.commutewise.org to learn about alternative commute options and register for an account to view carpool matches.

Celebrating 65 Years

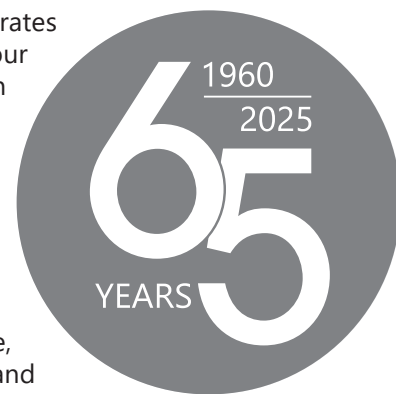
This year, the Commission proudly commemorates 65 years of protecting and enhancing our Region's future through innovative solutions in environmental, land use, and transportation planning.

The Commission was established on August 8, 1960, when then Governor Gaylord A. Nelson issued the executive order creating the Commission. Governor Nelson acted upon the unanimous petition of Kenosha, Milwaukee, Ozaukee, Racine, Walworth, Washington, and Waukesha Counties.

Since then, the Commission has served Southeastern Wisconsin by helping to solve problems and focusing regional attention on key issues of regional consequence, and providing objective information to aid the Region's decision-makers.

We want to acknowledge our dedicated staff, Commissioners, and committee members who have contributed to our impactful plans, projects, and programs through the years. We look forward to our continued collaboration with county and local governments, State and Federal agencies, and our many partners to keep our Region moving ahead.

As we say in Wisconsin: Forward!



Also in this Newsletter:

- New 2025-2028 Transportation Improvement Program..... **Page 2**
- Root River Floodplain Mapping Update..... **Page 3**
- Commission Attends Kenosha Expo **Page 4**



New eTIP Website

The Commission has rolled out a new version of the online eTIP database. The new interactive eTIP now provides a more robust project search function, dynamic mapping of projects, and a historical tracing of project amendments. Visit the eTIP website at sewrpc.ecointeractive.com.

New 2025-2028 Transportation Improvement Program

In December 2024, the Commission adopted the next four year (2025-2028) multimodal Transportation Improvement Program (TIP), which is a listing of transit, arterial highway, bicycle/pedestrian, and other improvement projects proposed to be implemented in Southeastern Wisconsin in the next four years. Projects with federal funding from the U.S. Department of Transportation must be listed in the TIP, and projects in the TIP are required to be consistent with VISION 2050, the Regional Transportation Plan (RTP). The TIP indicates the transportation system improvement priorities of State and local governments in Southeastern Wisconsin to be undertaken in each of the next four years.

The TIP is not intended to prioritize one transportation mode over another; rather, the TIP reflects results of funding decisions already made through a variety of selection and project prioritization processes. The Commission receives proposed TIP projects from local governments, the State, and transit agencies. The Commission only has discretion over the allocation of a very small proportion of federal funding. The TIP was approved by the Commission following review and public comment by the Commission’s Advisory Committees for Transportation System Planning and Programming.

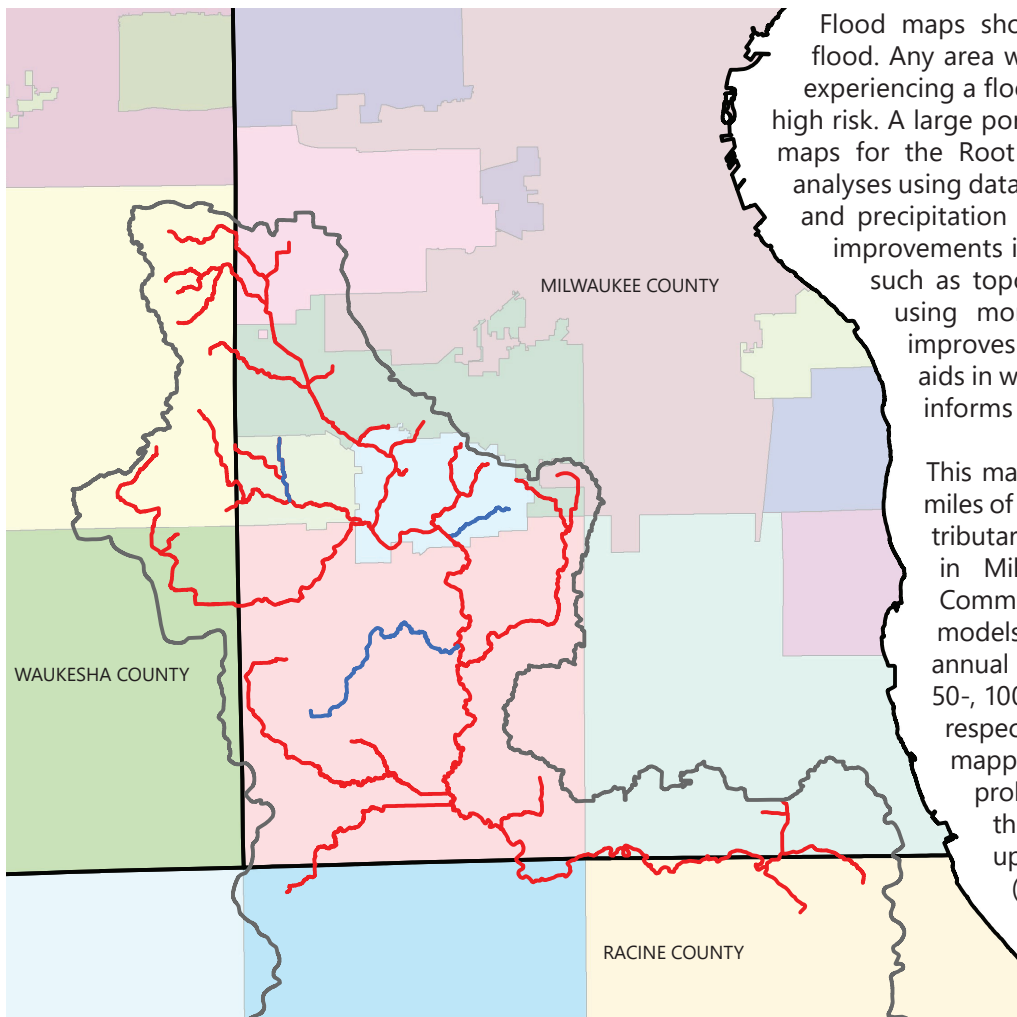
The TIP is amended from time to time when scope, funding, or timing of projects are substantially modified. All amendments and modifications are posted to the Commission’s TIP website upon completion. For details on all projects included in the 2025-2028 TIP, please visit the Commission’s eTIP website (sewrpc.ecointeractive.com). More information on the TIP and the development and approval process is available on the Commission’s website at www.sewrpc.org/TIP.



Root River Floodplain Mapping Update

Commission staff are currently updating floodplain mapping for the upper Root River watershed in partnership with the Milwaukee Metropolitan Sewerage District (MMSD). This project is a continuation of the effort started under the original Milwaukee County Automated Mapping and Land Information System (MCAMLIS) project to update all the stream floodplains in and tributary to Milwaukee County.

Upper Root River Watershed Map



- Streams to be Updated
- Streams with Updated Floodplains
- Upper Root River Watershed Boundary

Flood maps show how likely it is for an area to flood. Any area with a 1 percent or higher chance of experiencing a flood each year is considered to have a high risk. A large portion of the current FEMA floodplain maps for the Root River watercourses are based on analyses using data from the 1970s. Since then, land use and precipitation patterns have changed, along with improvements in modeling and base mapping data such as topography. Updating floodplain maps using more current data and technologies improves the accuracy of the maps, which aids in watershed management planning and informs engineering designs.

This mapping update effort spans nearly 29 miles of the Root River mainstem and 27 of its tributaries across nine different municipalities in Milwaukee and Waukesha Counties. Commission staff are completing hydraulic models for the 10-, 4-, 2-, 1-, and 0.2-percent annual probability flood events (10-, 25-, 50-, 100-, and 500-year recurrence intervals, respectively), and producing floodplain mapping for the 1- and 0.2-percent probability events. Building structures that were shown as inundated by the updated 1-percent annual probability (100-year recurrence interval) event were also identified by Commission staff.

Of the 27 tributaries and Root River mainstem that Commission staff are updating, four have been completed and an additional five are in progress. Targeted completion for the mapping update is end of year 2028.

Source: Southeastern Wisconsin Regional Planning Commission



Commission Attends Kenosha Expo

Recently, our Community Engagement team participated in the Kenosha Expo held at the University of Wisconsin-Parkside. Thank you to the attendees who took part in our survey about modes of transportation used to attend the Expo – whether it was driving, taking public transportation, or walking. Attendees had the opportunity to explore bus route options to Kenosha-area events using interactive maps while visiting our booth. Staff also highlighted the Commission’s recent Lake Management Plan Update for Twin Lakes (Mary and Elizabeth Lakes) in Kenosha County.

Annual Report Published

Our 2024 Annual Report highlights the many accomplishments of our team in collaboration with our partners to positively shape and protect our Region’s future.

Read the full report at:
www.sewrpc.org/2024AnnualReport

