



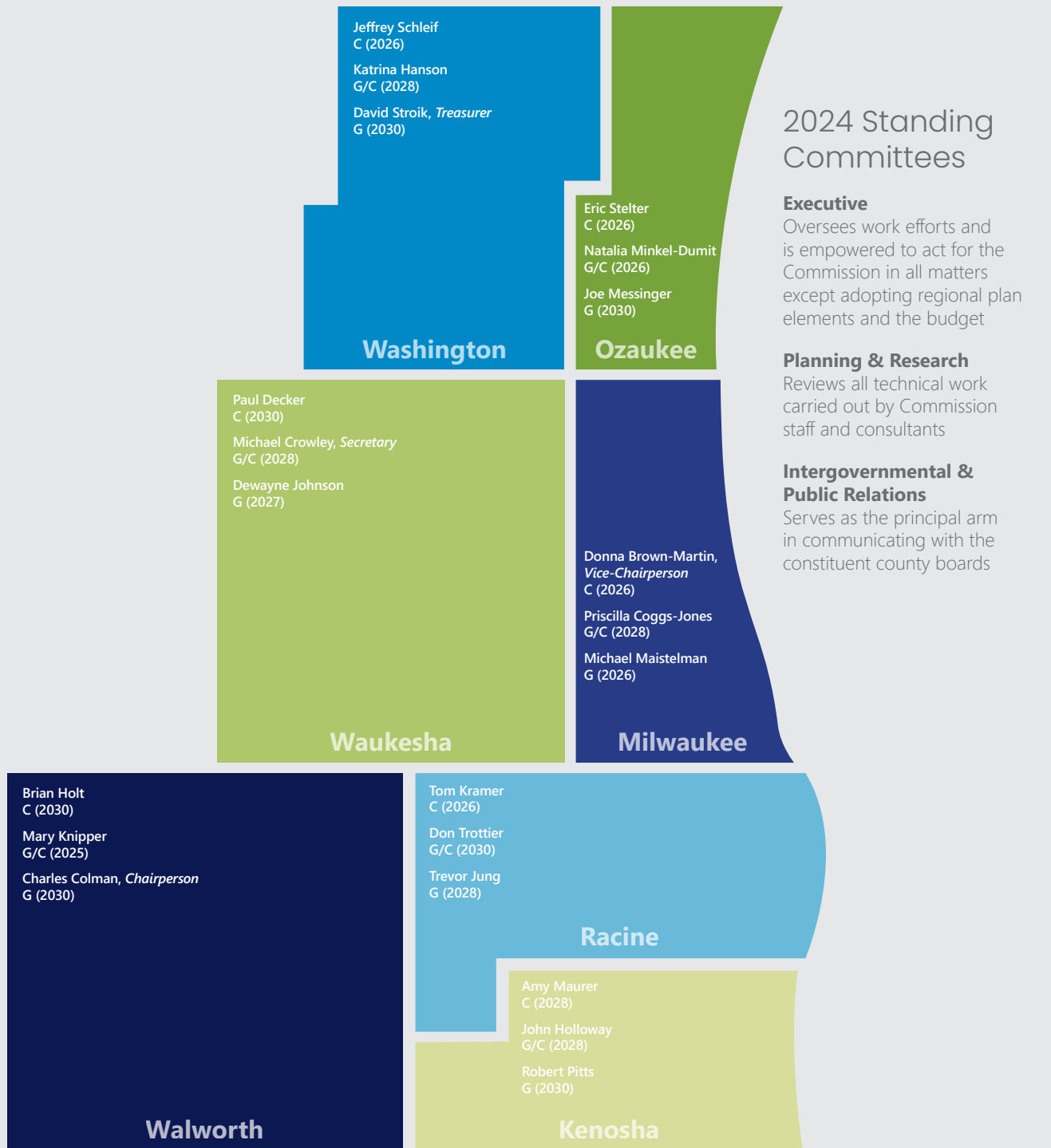
ANNUAL  
REPORT  
**2024**

# Commissioners and Committees in 2024

Under State law, the Southeastern Wisconsin Regional Planning Commission is governed by 21 Commissioners (three from each county):

- C Appointed by county board or appointed by county executive and confirmed by county board
- G/C Appointed by Governor from a county-supplied list of candidates
- G Appointed directly by Governor

Commissioners are appointed to six-year terms and can serve multiple terms. Term end dates are shown in parentheses.



## 2024 Standing Committees

### Executive

Oversees work efforts and is empowered to act for the Commission in all matters except adopting regional plan elements and the budget

### Planning & Research

Reviews all technical work carried out by Commission staff and consultants

### Intergovernmental & Public Relations

Serves as the principal arm in communicating with the constituent county boards

## 2024 Standing Committees

### **Executive Committee**

Charles Colman, *Chairperson*  
Donna Brown-Martin  
Michael Crowley  
Brian Holt  
Natalia Minkel-Dumit  
Robert Pitts  
David Stroik

### **Planning and Research Committee**

Michael Crowley, *Chairperson*  
Donna Brown-Martin  
Priscilla Coggs-Jones  
Charles Colman  
Katrina Hanson  
John Holloway  
Brian Holt  
Dewayne Johnson  
Trevor Jung  
Mary Knipper  
Michael Maistelman  
Amy Maurer  
Natalia Minkel-Dumit  
Robert Pitts  
Jeffrey Schleif  
Eric Stelter  
David Stroik

### **Intergovernmental and Public Relations Committee**

Michael Crowley, *Chairperson*  
Donna Brown-Martin  
Brian Holt  
Tom Kramer  
Amy Maurer  
Jeffrey Schleif  
Eric Stelter  
David Stroik

# Message from the Chairperson

## Southeastern Wisconsin Regional Planning Commission

Dear Southeastern Wisconsin,

It is my pleasure to present to you the Regional Planning Commission's 2024 Annual Report and share the many accomplishments of our agency over the last year. During 2024, we undertook impactful efforts in collaboration with our partners that connect our work to the common goals of a more sustainable and resilient Region.

Pursuant to §66.0309(8)(b), "the regional planning commission shall make an annual report of its activities to the legislative bodies of the local governmental units within the region." As our agency formed in 1960, this report marks our 64th annual report. Within these pages, you will see the agency's broad range of land and water stewardship efforts that support our long-range regional land use and transportation plan, VISION 2050, and other key regional plans. You can read more about these critical efforts on [www.sewrpc.org](http://www.sewrpc.org), newly designed in 2024.

Through this publication, we pay tribute to a fine public servant the Region lost in 2024: Jonathan Delagrave. Jonathan proudly served as Racine County Executive and was a dedicated Commissioner for our agency until his passing on June 28, 2024. He was a true champion of regional planning and served on all of our standing committees. Jonathan's passion and positive spirit will be greatly missed.

Thank you for your continued support and partnership in the Commission's work. For more than 60 years, we have been committed – with you – to address opportunities and meet challenges confronting our changing Region. We look forward to continuing our service in cooperation with county and local governments, State and Federal agencies, and our many partners to positively shape and protect our Region's future. Please reach us any time to learn more about the Commission's activities or engage in regional efforts.

Very truly yours,



Charles L. Colman  
Chairperson

# About Us

The **Southeastern Wisconsin Regional Planning Commission** is the official areawide advisory planning agency for Kenosha, Milwaukee, Ozaukee, Racine, Walworth, Washington, and Waukesha Counties, and the metropolitan planning organization for the Region. The Commission was established in 1960 under Section 66.0309 of the *Wisconsin Statutes* in response to petitions submitted by each of the seven Southeastern Wisconsin counties. It is the largest of the nine regional planning commissions in Wisconsin in terms of staff, budget, and population served.

The Commission performs three basic functions to address regional issues:

- ▶ Provide basic regional data and analyses to Federal agencies, State agencies, and entities throughout the Region
- ▶ Develop a framework of long-range areawide plans for the physical development of the Region, per State and Federal requirements
- ▶ Coordinate day-to-day planning activities in the Region

To see Commission budget and funding information, visit [www.sewrpc.org/Budget-and-Funding](http://www.sewrpc.org/Budget-and-Funding).

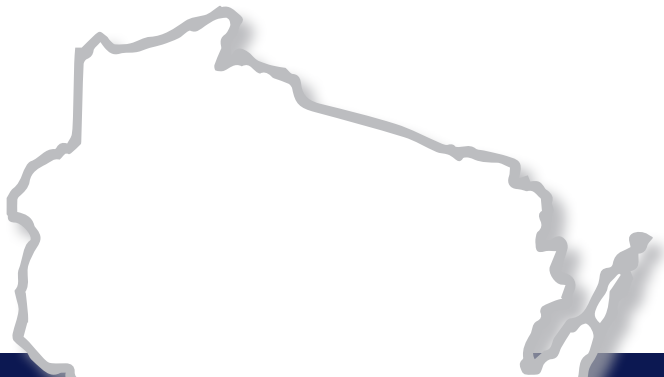
## Why Know Us?

We focus on addressing issues that transcend the political boundaries and fiscal capabilities of individual communities. Our work ensures that the Region is generating economic, environmental, and social value now and in the future. We care about your ability to thrive in this Region. Simply put, our work matters because YOU matter.

## A Regional Approach

The Commission's role is to help solve problems and focus regional attention on key issues of regional consequence, providing objective information to aid the Region's decision-makers. Regional planning provides a meaningful technical approach to the proper planning and design of public works systems, such as: parks and public spaces, transportation (all modes and roads), utility coordination, and water supply and wastewater infrastructure.

A regional approach is also essential for addressing environmental issues, including: air, soil, and water pollution, drought and flooding, land and water use changes, and natural resource deterioration.



# Region Overview

Local Governments:

**29** Cities | **67** Villages | **51** Towns

Area: **2,689** Square Miles | **5%** of State

Population: **2.05** Million | **35%** of State

Employment: **1.34** Million Jobs | **35%** of State

Wealth: **\$295.9** Billion Equalized Valuation | **35%** of State



## MPO Role

The Commission is the federally designated Metropolitan Planning Organization (MPO) for Southeastern Wisconsin. Through this role, we ensure that all transportation planning and programming requirements are met through a comprehensive, cooperative, and continuing planning process.

Our service as the MPO ensures that the Region is continuously eligible for federal highway and transit funds. We are also specifically responsible for working cooperatively to select transportation projects for federal funding directly allocated to the Milwaukee urbanized area.

## Certification Reviews

Quadrennially, the Federal Highway Administration (FHWA) and Federal Transit Administration (FTA) conduct a federally required review of Southeastern Wisconsin’s transportation planning process. This review determines whether the process meets the federal transportation planning requirements outlined in 23 CFR 450 and ensures conformity of plans and programs in accordance with 50 CFR 51. During the summer of 2024, the Commission underwent another federal quadrennial review with the Federal review team recertifying the Commission’s planning process.

# Regional Planning

The Commission, as the areawide planning agency for Southeastern Wisconsin, is responsible for making and adopting a master plan for the physical development of the Region, including the use of land and supporting transportation and utility facilities. To accomplish this, the Commission prepares individual plan elements that together comprise the Region's comprehensive plan.

4

**Each regional plan element in this section is intended to address an identified areawide developmental or environmental problem. The individual elements are coordinated through an areawide land use and transportation plan, which is currently presented in VISION 2050.**

[www.sewrpc.org/VISION-2050](http://www.sewrpc.org/VISION-2050)



VISION 2050 recommends a long-range vision for land use and transportation in the seven-county Southeastern Wisconsin Region. The plan makes recommendations to local and State government to shape and guide land use development and transportation improvement, including public transit, arterial streets and highways, freight, and bicycle and pedestrian facilities, to the year 2050.



## Economic Development Strategy

[www.sewrpc.org/Economic-Development-Strategy](http://www.sewrpc.org/Economic-Development-Strategy)

The Comprehensive Economic Development Strategy (CEDS) for Southeastern Wisconsin is a strategy-driven plan for regional economic development prepared collaboratively with the Milwaukee 7 Regional Economic Development Partnership (M7).

In 2024, Commission staff, in collaboration with M7, supported implementation of the current CEDS. The CEDS provides a strategic framework for economic development in the Region. Preparing a new CEDS every five years ensures that communities and organizations within the Region qualify for U.S. Economic Development Administration funding targeted at economically distressed areas.



## Food System

[www.sewrpc.org/Food-System](http://www.sewrpc.org/Food-System)

The Regional Food System Plan is addressing the food system from a regional perspective, focused on improving access to healthy foods for residents of Southeastern Wisconsin.

In 2024, Commission staff continued refining Chapter 2, The Food System, and Chapter 3, Consumers, based on feedback from the Environmental Justice Task Force and the Regional Food System Plan Advisory Committee.

Public outreach events where staff focused on the Regional Food System Plan included:

- ▶ 8th Annual Green & Healthy Schools Conference
- ▶ 2024 Food Entrepreneurship Ecosystem Development (FEED) Summit
- ▶ Southeast Wisconsin Food Security Forum



## Housing

[www.sewrpc.org/Housing](http://www.sewrpc.org/Housing)

The Regional Housing Plan contains 50 recommendations to support decent and affordable housing for all residents of Southeastern Wisconsin.

In 2024, activities supporting Regional Housing Plan implementation included:

- ▶ Commission staff served on the Walworth County Workforce Housing Strategy Task Force and the Kenosha County Housing Task Force. The Task Forces are focused on encouraging the development of attainable housing within their respective counties.
- ▶ In addition to presentations made to the Task Forces, Commission staff made presentations to the Kenosha Area Business Alliance, University of Wisconsin-Milwaukee, the Greater Whitewater Committee, and the Whitewater Housing Roundtable.



### Natural Areas

[www.sewrpc.org/Natural-Areas](http://www.sewrpc.org/Natural-Areas)

The Regional Natural Areas Plan seeks to identify and protect what remains of the Region’s landscape as it existed pre-European settlement and identifies other areas vital to maintaining endangered, threatened, and rare plant and animal species.

In 2024 Commission staff completed a draft update of the Regional Natural Areas and Critical Species Habitat Protection and Management Plan that included development of a publicly accessible interactive webtool that provides access to data and site-level information.



### Parks & Open Space

[www.sewrpc.org/Regional-Park-and-Open-Space](http://www.sewrpc.org/Regional-Park-and-Open-Space)

The Commission adopted the Regional Park and Open Space Plan in 1977. The plan recommends preserving environmentally significant open space lands and providing sites and facilities for major resource-oriented outdoor recreation activities throughout the Region. Over time, the plan has been amended on a county-by-county basis, with Commission staff assisting in most county plan updates. The Commission adopts these county plan updates as amendments to the Regional Park and Open Space Plan.

In 2024, Commission staff completed an update of the Ozaukee County Park and Open Space Plan.





### Water Quality

[www.sewrpc.org/Water-Quality](http://www.sewrpc.org/Water-Quality)

The Regional Water Quality Management Plan provides for sound watershed planning and preservation and was designed to make the Region's waters "fishable and swimmable" to the extent practical.

In 2024, wastewater facility plan reviews were completed for the Lake Pewaukee Sanitary District (Waukesha County) and the Village of Slinger (Washington County).

Wastewater facility plan technical support was provided to the City of Racine (Racine County), Village of Germantown (Washington County), the City of Brookfield for the Fox River Water Pollution Control Center (Waukesha County), and the Town of Waterford Sanitary District (Racine County).



### Water Supply

[www.sewrpc.org/Water-Supply](http://www.sewrpc.org/Water-Supply)

The Regional Water Supply Plan identifies appropriate sources of water supply to meet projected water demands in Southeastern Wisconsin by 2035.

In 2024, water supply service area determination was coordinated between the Wisconsin Department of Natural Resources and the Village of Menomonee Falls (Waukesha County).

Commission staff, upon request, forwarded our Technical Report No 47, *Groundwater Recharge In Southeastern Wisconsin Estimated by a GIS-Based Water-Balance Model* to the West Central Wisconsin Regional Planning Commission to potentially replicate our methodology for their Sanitary Sewer Assessment planning review.

## Regional Planning **Featured Projects**

8





## VISION 2050

[www.sewrpc.org/VISION-2050](http://www.sewrpc.org/VISION-2050)

In June 2024, the Commission adopted the 2024 Review and Update of VISION 2050, the long-range land use and transportation plan for Southeastern Wisconsin. This update is intended to keep the plan current and address federal requirements. The 2024 Update was guided and approved by the Commission’s Advisory Committees on Regional Land Use and Transportation Planning, prior to Commission adoption. Commission staff will be incorporating the analyses and changes from the 2024 Update into the Third Edition of the VISION 2050 plan report, to be published in 2025. The updated plan report will once again provide a framework to guide regional land use and transportation implementation efforts.



## Chloride Study

[www.sewrpc.org/Chloride-Study](http://www.sewrpc.org/Chloride-Study)

The Chloride Impact Study is the foremost comprehensive study undertaken to identify significant sources and magnitudes of chloride (salt) in the Region’s surface water and groundwater resources.

In 2024 Commission staff and partners completed three technical reports for the Chloride Impact Study: Technical Report No. 62, *Impacts of Chloride on the Natural and Built Environment*; Technical Report No. 64, *Regression Analysis of Specific Conductance and Chloride Concentrations*; and Technical Report No. 67, *Legal and Policy Considerations for the Management of Chloride*.



## Transportation Improvement Program

[www.sewrpc.org/TIP](http://www.sewrpc.org/TIP)

The TIP is a listing of all arterial highway, public transit, and other transportation improvement projects proposed to be carried out over a four-year period.

In 2024, the Commission adopted the new 2025-2028 TIP that includes all Federally funded highway, transit, and bicycle/pedestrian projects proposed to be carried out by State and local governments over the next four years in Southeastern Wisconsin. Transportation projects proposed to be funded with the FHWA and FTA funding must be listed in the TIP. The 2025-2028 TIP includes 513 projects, as amended through 2023, representing a total potential investment of \$3.5 billion.

In addition, the Commission rolled out a new, improved version of the eTIP in 2024. The new eTIP now provides a more robust project search function, dynamic mapping of projects, and a historical tracing of project amendments.

# Local Planning

Since it was created in 1960, the Commission has assisted county and local governments with a wide range of plans and studies related to land use, parks, transportation, natural resources, and other important topics.

The Commission's various local planning assistance promotes coordination between regional and local plans, helps county and local governments implement plans, and encourages the sound physical development of the Region. Services are available to all county and local governments that participate in and financially support the regional planning program.



## Comprehensive Planning

[www.sewrpc.org/Comprehensive-Planning](http://www.sewrpc.org/Comprehensive-Planning)

The Commission has been helping counties and communities prepare and update comprehensive plans since the State passed the "Smart Growth" law in 1999.

In 2024, Commission staff continued work on an update of the Kenosha County Multi-Jurisdictional Plan, and comprehensive plans for the City of Waukesha, the Villages of Salem Lakes and Somers, and the Town of Cedarburg.



## Farmland Preservation Planning

[www.sewrpc.org/Farmland-Preservation-Planning](http://www.sewrpc.org/Farmland-Preservation-Planning)

Commission staff aid in efforts to preserve lands with our most productive soils so they may continue to support agricultural uses.

In 2024, Commission staff continued work on an update of the Racine County Farmland Preservation Plan and completed the Washington County Land Evaluation and Site Assessment.



## Hazard Mitigation Planning

[www.sewrpc.org/Hazard-Mitigation-Planning](http://www.sewrpc.org/Hazard-Mitigation-Planning)

The Commission assists counties and local governments with preparing hazard mitigation plans aimed at minimizing the impact of disasters.

In 2024, Commission staff completed hazard mitigation plan updates for Kenosha, Racine, and Washington Counties and continued work on the plan update for Milwaukee County. These plans include long-term and equitable strategies for protecting people and property by minimizing the impact of natural disasters, including flooding, coastal bluff failure, tornadoes, extreme temperature events, and severe winter storms. The plans also fulfill Federal Emergency Management Agency (FEMA) requirements, assuring communities are eligible to apply for federal funding for hazard mitigation projects.



### Land & Water Resource Management Planning

[www.sewrpc.org/Land-and-Water-Resource-Management-Planning](http://www.sewrpc.org/Land-and-Water-Resource-Management-Planning)

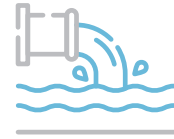
The Commission assists counties with preparing and updating land and water resource management plans.



### Local Park & Open Space Planning

[www.sewrpc.org/Park-and-Open-Space-Planning](http://www.sewrpc.org/Park-and-Open-Space-Planning)

In 2024, Commission staff completed an update of the Village of Sussex park and open space plan and initiated an update of the Village of Caledonia park and open space plan.



### Sanitary Sewer Service Area Planning

[www.sewrpc.org/Sanitary-Sewer-Service-Area-Planning](http://www.sewrpc.org/Sanitary-Sewer-Service-Area-Planning)

As part of its regional water quality management planning function, the Commission works with local wastewater treatment plant management agencies and the Wisconsin Department of Natural Resources to prepare and update local sewer service area plans.

In 2024, Commission staff completed amendments to the sanitary sewer service area plans for the Villages of Bristol, Dousman, Germantown, Grafton, Lisbon, and Kewaskum, and initiated amendments to the sanitary sewer service area plans for the Cities of Burlington and Port Washington, and the Village of Jackson. In 2024, Commission staff also initiated comprehensive updates of the sanitary sewer service area plans for the Villages of Germantown and Menomonee Falls.

Updates and amendments to local plans serve as amendments to the Regional Water Quality Management Plan.



### Transportation Planning

[www.sewrpc.org/Transportation-Planning](http://www.sewrpc.org/Transportation-Planning)

Through its role as the federally designated Metropolitan Planning Organization, the Commission is continually engaged in multimodal transportation planning, working cooperatively with the Wisconsin Department of Transportation, transit operators, and county and local units of government.



### Water Resources Planning

[www.sewrpc.org/Water-Resources-Planning](http://www.sewrpc.org/Water-Resources-Planning)

The Commission provides a variety of water resources planning services to the Region. These include efforts that derive from our role as the State-designated areawide water quality management planning agency for the Region, as well as efforts related to floodplain and coastal management.



Credit: VISIT Milwaukee

## Local Transportation **Planning Efforts**

Transportation issues represent a significant component of regional planning in all metro areas. From its creation in the early 1960s, the Commission has been engaged in multimodal transportation planning, working cooperatively with the Wisconsin Department of Transportation (WisDOT), transit operators, and county and local units of government in Southeastern Wisconsin.

Much of the local transportation planning efforts the Commission is involved in are conducted using VISION 2050 as a regional framework. These local efforts often serve to refine and implement elements of the plan's recommended transportation system.



## Public Transit

[www.sewrpc.org/Transit](http://www.sewrpc.org/Transit)

In 2024, Commission staff evaluated applications to help distribute over \$3 million for projects that enhance mobility for seniors and people with disabilities in the Milwaukee urbanized area, and continued to assist transit operators with Federal compliance and research. Commission staff also initiated a study of Kenosha Area Transit bus routes that will evaluate route performance, develop alternative route alignments, and gather public input.



## Streets & Highways

[www.sewrpc.org/Streets-and-Highways](http://www.sewrpc.org/Streets-and-Highways)

In 2024, Commission staff worked with local officials in the Milwaukee urbanized area to approve 39 local highway and transit projects totaling \$76 million in Federal Surface Transportation Block Grant Program funding allocated to the Milwaukee urbanized area.

## Bikes & Pedestrians

[www.sewrpc.org/Bikes-and-Pedestrians](http://www.sewrpc.org/Bikes-and-Pedestrians)

In 2024, Commission staff completed the initial work to update the Village of Mount Pleasant's bicycle and pedestrian plan. A final plan is expected to be completed in late 2025. Commission staff also continued its annual nonmotorized count program by conducting counts at four continuous counters and approximately 70 short-term count sites throughout the Region. In addition, Commission staff worked with Milwaukee urbanized area officials to select five local bicycle/pedestrian projects for approximately \$5 million in Federal Transportation Alternative Program funding allocated to the Milwaukee urbanized area.



## Water Resources **Planning Efforts**

Since completing an initial Regional Water Quality Management Plan in 1979, the Commission has worked cooperatively with the Wisconsin Department of Natural Resources and other partners to conduct a continuing water quality management planning effort. A great deal of solutions and projects have come out of this plan and our staff has continually supported their implementation in a variety of ways.

From the very beginning, the watershed has been used as the basic planning unit for environmental-related work. A series of comprehensive watershed plans have been developed over the years addressing interrelated issues in each major watershed, focusing on water quality and floodland management. Those plans provided the basis for regional sanitary sewerage and water quality management plans as well as ongoing efforts to address stormwater and floodland management issues.







## Lake & Stream Management

[www.sewrpc.org/Lakes-and-Streams](http://www.sewrpc.org/Lakes-and-Streams)

The Commission and the Wisconsin Department of Natural Resources work with local lake and stream community organizations to prepare lake and stream management plans.

In 2024, Commission staff completed three shoreline inventories, 12 aquatic plant surveys, and aquatic invasive species and water quality monitoring projects across nine lake and stream sites in Ozaukee and Walworth Counties.

Staff also completed seven reports and seven staff memos for waterbodies inventoried in Ozaukee County.

In addition, Commission staff continued to work on 12 lake and stream management planning projects across Kenosha, Racine, Walworth, Washington, and Waukesha Counties.



## Flood Management

[www.sewrpc.org/Flood-Management](http://www.sewrpc.org/Flood-Management)

The Commission maintains a continuing program to address stormwater and floodplain management issues, applying significant expertise in hydrologic and hydraulic modeling across the Region.

In 2024, Commission staff efforts involved updating floodplain boundaries on multiple streams in the Region. These include the Root River and tributaries in Milwaukee County, Southwick Creek in Walworth County, and the South Branch Pike River and tributaries in Kenosha County. Commission staff also provided technical support to Milwaukee County for the Oak Creek Mill Pond and Dam public meeting and the City of Glendale and MMSD for the Estabrook Dam removal floodplain update.



## Coastal Management

[www.sewrpc.org/Coastal-Management](http://www.sewrpc.org/Coastal-Management)

Commission staff assist the Wisconsin Department of Administration in conducting the Wisconsin Coastal Management Program. The program was established in 1978 under the Federal Coastal Zone Management Act to preserve and improve Wisconsin's Great Lakes coastal resources for present and future generations.

The Commission is committed to working in partnership with the Wisconsin Coastal Management Program to improve and enhance the ecological, economic and aesthetic assets of Lake Michigan and its coastal communities

In 2024, Commission staff continued to participate in the Collaborative Action for Lake Michigan (CALM) effort.

# Info & Data

Our partners across Southeastern Wisconsin regularly look to the Commission as a resource for accurate data and objective information to assist in planning and decision making. To see additional information and data the Commission offers, including brownfields, demographics, land use data, precipitation frequency, publications, and regional performance monitoring, visit [www.sewrpc.org/Info-and-Data](http://www.sewrpc.org/Info-and-Data).



## ADID Wetlands

[www.sewrpc.org/ADID-Wetlands](http://www.sewrpc.org/ADID-Wetlands)

The Commission provides technical assistance to Federal and State agencies in preparing maps of wetland areas deemed inappropriate for the disposal of fill and dredged materials.



## Air Quality

[www.sewrpc.org/Air-Quality](http://www.sewrpc.org/Air-Quality)

The Commission has long worked to address air management issues, with a specific focus on ensuring that Commission transportation plans and programs “conform” to air quality standards.



## Economic Modeling

[www.sewrpc.org/Economic-Modeling](http://www.sewrpc.org/Economic-Modeling)

Through a partnership with the Wisconsin Economic Development Corporation, the Commission can access and share local employment and industry data available through Lightcast (formerly EMSI).



## Environmental Corridors

[www.sewrpc.org/Environmental-Corridors](http://www.sewrpc.org/Environmental-Corridors)

The Commission has defined, mapped, and long recommended protecting environmental corridors to help preserve the Region’s most important remaining natural resource elements.



## Mapping & Survey Data

[www.sewrpc.org/Mapping-and-Survey-Data](http://www.sewrpc.org/Mapping-and-Survey-Data)

The Commission’s Interactive Mapping Application provides data essential to the planning process.



## Non-Motorized Count Program

[www.sewrpc.org/Non-Motorized-Count-Program](http://www.sewrpc.org/Non-Motorized-Count-Program)

The Commission operates a program that collects count data for non-motorized modes, such as bicycle and pedestrian travel, and reports the data through an interactive website.



## Plant Identification Guides

[www.sewrpc.org/  
Plant-Identification-Guides](http://www.sewrpc.org/Plant-Identification-Guides)

Commission staff prepares information to assist in identifying plants in the field, including wetland vegetation.



## Climate Planning

[www.sewrpc.org/  
Climate-Change](http://www.sewrpc.org/Climate-Change)

The Metropolitan Milwaukee Priority Pollution Reduction Action Plan was submitted to the U.S. Environmental Protection Agency as part of its Climate Pollution Reduction Grant program in February 2024. This document includes the following four required elements: greenhouse gas emissions inventory, priority pollution reduction measures, low-income and disadvantaged communities benefits analysis, and a review of authority to implement. It also includes six priority strategies that can achieve significant greenhouse gas reductions. These strategies are based on the Milwaukee Climate and Equity Plan and were developed with stakeholder input and outreach to counties and municipalities within the Milwaukee Metropolitan Statistical Area. The next phase of the program will include additional outreach and analysis, concluding with a Comprehensive Plan, which will be completed in 2025.



## Americans with Disabilities Act

[www.sewrpc.org/  
Americans-with-Disabilities-Act](http://www.sewrpc.org/Americans-with-Disabilities-Act)

The Commission is committed to improving accessibility for people with disabilities and supporting communities in meeting the requirements of the Americans with Disabilities Act (ADA).

Approximately one in four Americans have a disability and this population is projected to grow. To provide information on public entities' obligations for serving this growing population, Commission staff, in coordination with one of our Community Partners, Independence First, held a training on the Americans with Disabilities Act in November 2024. This training session for local government staff was focused on the history and purpose of the ADA, how local governments can effectively serve customers with disabilities, and the ADA requirements in the public right of way. Commission staff will continue to coordinate future training sessions on the ADA.



## Zoning & Ordinances

[www.sewrpc.org/  
Zoning-and-Ordinances](http://www.sewrpc.org/Zoning-and-Ordinances)

The Commission prepares planning guides, model ordinances, and other materials to assist county and local governments as they prepare plans and implement ordinances.

# Services

Commission staff provide a variety of services, primarily to local and county governments in support of their various planning efforts. To see additional services the Commission offers, including plan review and transportation services, visit [www.sewrpc.org/Services](http://www.sewrpc.org/Services).



## CommuteWISE



## Economic Development

18

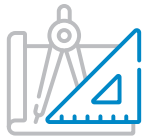
[www.sewrpc.org/CommuteWISE](http://www.sewrpc.org/CommuteWISE)

The Commission's CommuteWISE program aims to enhance mobility by connecting workers to job opportunities, sharing transportation options, expanding access, reducing traffic congestion, and improving air quality.

The CommuteWISE program sponsored two successful commuter challenges to encourage alternatives to driving alone. Through the program, Commission staff also assisted regional employers in establishing employee carpooling programs and continued to share information on CommuteWISE at local and statewide events.

[www.sewrpc.org/Economic-Development](http://www.sewrpc.org/Economic-Development)

Economic development in Southeastern Wisconsin is conducted by county and local economic and community development organizations, including economic development corporations or agencies established by each of the seven counties in the Region. Regionally, the Milwaukee 7 (M7) provides a cooperative economic development platform for the seven counties. The Commission serves as a resource through its staff, data, and plans to support county economic development organizations and M7 as they work to maintain and expand the regional economy.



### County Surveying

[www.sewrpc.org/County-Surveying](http://www.sewrpc.org/County-Surveying)

Commission staff continues to carry out the responsibilities of the Milwaukee County Surveyor, and provide County Surveyor services to Kenosha, Ozaukee, Walworth, and Waukesha Counties. Staff also assist the County Surveyor in Racine County as part of an agreement with the Wisconsin Department of Transportation.

In 2024, staff replaced 235 U.S. Public Land Survey System (USPLSS) monument corners that had been disturbed or destroyed, primarily by road reconstruction; readjusted coordinate positions for 232 USPLSS corners from legacy measurements to improve overall geodetic integrity of the survey system; and performed GPS validation of the computed State Plane Coordinate System values for 384 USPLSS corners.

Commission staff also finalized orthoimagery of the Region and worked with the Region’s Land Information Offices to validate the accuracy of the acquired imagery.



### Environmental Fieldwork

[www.sewrpc.org/Environmental-Fieldwork](http://www.sewrpc.org/Environmental-Fieldwork)

The Commission continually helps local, county, State, and Federal units of government evaluate project proposals by defining the extent and quality of wetlands, environmental corridors, natural areas, rare species, and other sensitive natural resources contained on project sites. Commission staff are available to review environmental corridor and wetland delineations conducted by private consultants.

Commission staff worked on a total of 91 projects involving fieldwork in 2024. Projects included 44 wetland delineations, eight combined wetland and environmental corridor delineations, 12 environmental corridor determinations, 25 vegetation surveys, and a critical species survey.

Commission staff also completed 25 Natural Areas and Critical Species Habitat Sites site visits.

# Community Engagement

Community Engagement is an important part of our regional planning efforts and implementation. We work across communities to engage residents and encourage everyone to participate in planning for Southeastern Wisconsin's future. We place a continual emphasis on effective outreach to residents of diverse communities, led by our Community Engagement Division. We directly engage and provide updates to more than 75 Primary Organizations serving specific population subgroups, including nine Community Partners.

Our engagement techniques are constantly evolving and include in-person and virtual meetings and events, print and digital content, and an open invitation for the public to discuss issues facing the Region with Commission staff.

In 2024, the Public Involvement and Outreach Division was rebranded to the Community Engagement Division. Engagement activities were conducted throughout the entire Region around major 2024 Commission efforts, including the 2024 Update to VISION 2050, the Regional Natural Areas Plan Update, and the Federal transportation planning certification review. The number of community expos and student engagement activities attended by Commission staff also increased in 2024.

To learn more about our Community Engagement efforts, visit [www.sewrpc.org/Community-Engagement](http://www.sewrpc.org/Community-Engagement).



# Environmental Justice Task Force

Environmental justice (EJ) prioritizes the fair treatment and meaningful involvement of all people regardless of race, color, national origin, or income, with respect to the development, implementation, and enforcement of environmental laws, regulations, and policies. EJ populations include people of color, low-income populations, and people with disabilities. The primary role of the Commission's Environmental Justice Task Force (EJTF) is to enhance the consideration and integration of EJ throughout the regional planning process. During its four meetings in 2024, the EJTF reviewed and provided input on a variety of topics, including the Commission's draft Community Engagement Plan, public involvement and outreach efforts, Natural Areas Plan Update, Metropolitan Milwaukee Priority Pollution Reduction Action Plan, and Federal transportation planning certification review. The EJTF was also engaged in the Wisconsin Department of Transportation's Active Transportation Plan 2050, U.S. Environmental Protection Agency's proposed rules related to air quality and greenhouse gas emissions, Milwaukee County Complete Communities project, Wisconsin Department of Natural Resources Environmental Justice efforts, and Wisconsin Office of Environmental Justice initiatives.

To learn more about the Task Force, visit [www.sewrpc.org/Environmental-Justice-Task-Force](http://www.sewrpc.org/Environmental-Justice-Task-Force).

# Staff

The Southeastern Wisconsin Regional Planning Commission prepares an annual work program that is reviewed and approved by Federal and State funding agencies. This work program is then carried out by a core staff of full-time professional, technical, and administrative personnel, supplemented by additional temporary staff and consultants as needed. At the end of 2024, the Commission staff totaled 66, including 63 full-time and 3 part-time employees.

For a current listing of Commission staff, visit [www.sewrpc.org/Staffing](http://www.sewrpc.org/Staffing).

## Executive Leadership

Stephanie Hacker, AICP, LEED AP, *Executive Director*

Benjamin McKay, AICP, *Deputy Director*

Elizabeth Larsen, SPHR, SHRM-SCP, *Director of Administration*

Christopher Hiebert, PE, *MPO Director*

## Administrative Services

**Elizabeth Larsen, SPHR, SHRM-SCP, Director of Administration**

Megan Deau, *Principal Graphic Designer*

Justin Kendall, *Systems Administrator*

Robert Klatkiewicz, *Office Clerk*

Alina Panasiuk, *Accounting/HR Specialist*

Richard Wazny, *Print Shop/Building Supervisor*

Jim Zehner, *Communications Specialist*

## Environmental Planning

**Laura Herrick, PE, CFM, Chief Environmental Engineer**

**Thomas Slawski, PhD, Chief Specialist-Biologist**

Jennifer Dietl, *Principal Specialist*

Hanna Helker, *Intern*

Shane Heyel, *Senior Specialist*

Karin Hollister, PE, *Principal Engineer*

Christopher Jors, *Principal Specialist*

Zachary Kron, *Senior Specialist*

James Mahoney, PE, *Engineer*

Danielle Matuszak, *Specialist-Biologist*

Nicklaus Neureuther, *Specialist*

Julia Orłowski, PE, *Senior Engineer*

Aaron Owens, *Principal Planner*

Justin Poinatte, *Principal Specialist*

Megan Shedivy, *Planner*

Jessica Topp, *Specialist-Biologist*

## Land Use Planning

**Joel Dietl, AICP, Chief Land Use Planner**

Frank Fierek, Jr., *Senior Specialist*

Donald Heckel, *Senior Planner*

Kendall Johnson, *Research Analyst*

Richard Kania, AICP, RLA, *Principal Planner*

Gideon Oduro, *Spatial/Data Analyst*

Robbie Robinson, *Principal Planner*

David Schilling, *Principal Planner*

James Siegler, *Planner*

Bryan Walter, *Planner*

## Community Engagement

**Nakeisha Payne, Chief Community Engagement Specialist**

## Special Projects

**Eric Lynde, Chief Special Projects Planner**

Barry Gore, *Principal Planner*

Miranda Page, JD, *Planner*

Christopher Parisey, *Senior Planner*

## Surveying and GIS

**Robert Merry, PLS, Chief Surveyor**

**Michael Gosetti, GIS Manager**

Patricia Bouchard, *GIS Specialist*

Kaleb Kutz, *Planner*

Timothy Gorseger, *GIS Specialist*

Benjamin Johnson, *Land Survey Assistant*

Bradley Subotnik, *Senior GIS Specialist*

Brennan DeSwarte, *Land Survey Assistant*

Andrew Traeger, *Certified Survey Technician*

## Transportation Planning

**Ryan Hoel, PE, Chief Transportation Engineer**

**Jennifer Sarnecki, AICP, Deputy Chief Transportation Planner**

Gom Ale, PhD, *Principal Planner-Modeler*

Carrie Cooper, *Principal Planner*

Joseph Delmagori, *Senior Planner*

Victor Helin, *Senior Planner*

William Henning, *Engineer*

Ethan Johnson, *Senior Planner*

Reginald Mason, *Research Analyst*

Samuel Mercier, *Senior Engineer*

Gabriel Rosenwald, *Engineer*

Xylia Rueda, *Senior Planner*

Dana Shinnors, *Commute Program Lead*

Adam Schumacher, *Intern*

Cinthia Tellez-Silva, *Planning Technician*

W239 N1812 Rockwood Drive  
P.O. Box 1607  
Waukesha, WI 53187

Global Water Center  
247 Freshwater Way  
Milwaukee, WI 53204

Phone: 262.547.6721  
[www.sewrpc.org](http://www.sewrpc.org)



 @SEWRPC

 SEWRPC

 @SEW\_RPC

 @sew\_rpc