

Southeastern Wisconsin **Regional Planning Commission**



Public Involvement and Outreach Update

Environmental Justice Task Force Meeting
September 2023

April 2023 – August 2023 PIO Highlights

EJTF member, Annabelle Bustillos, helping let her patrons know about the Commission's September 2023 bus survey



EJTF liaison, Donna Brown-Martin, chairing the Regional Transportation and Land Use Advisory Committees Meeting

EJTF member, Yolanda Adams, at the Reaching for Rainbows Scholarship Dinner





April 2023 – August 2023 PIO Highlights



Walworth County CHIPS Core Team Meeting



SE Wisconsin Public Health Officers Monthly Meeting

YOU'RE INVITED!

OPEN HOUSE EVENT
 WEDNESDAY, JULY 12TH
 9AM REMARKS | 9:15 - 11AM TOURS
 STARTING AT 2655 N 16TH ST

Join us to celebrate the first four Milwaukee Community Land Trust homes available on Milwaukee's north side! These four homes will be available for purchase as MCLT homes, and developed by our partners at VIA CDC through their turkey homes program.
 RSVP by clicking [here](https://forms.gle/KS8ambvsQa7rxYY2) or at <https://forms.gle/KS8ambvsQa7rxYY2>

SPEAKERS

RUSSELL W. STAWPSE II DIRECTOR OF STRATEGIC PLANNING	JAMONT DAVIS MCLT EXECUTIVE DIRECTOR	JOANNA SAUTCH VIA EXECUTIVE DIRECTOR

TOUR LOCATIONS
 2532 N 14th St | 2533 N 14th St | 2578 N 16th St | 2655 N 16th St

MILWAUKEE COMMUNITY LAND TRUST (MCLT) transforms houses into pillars of strong families and neighborhoods by making them permanently affordable to low-income buyers. milwaukeeclt.org

VIA CDC is a community development organization whose mission is to be a partner in building strong, healthy neighborhoods where all of us can thrive. viacdc.org

Together, these organizations connect Milwaukee residents to affordable homes, and strengthen our neighborhoods for generations to come.

VIA CDC and Community Land Trust Affordable Housing Open House



April 2023– August 2023 PIO Highlights

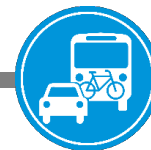


2023 Waukesha Sustainability Fair from the Waukesha Green Team

Racine County Economic Development Corporation



Green & Healthy Schools Conference





Community Partner Events April 2023 – August 2023



Community Partner Events

➤ Common Ground

- 7/10 – Common Ground Reckless Driver Town Hall
- 5/26 – Washington Park Ribbon Cutting



Community Partner Events

➤ EDBC

- 8/24 – Annual Business Council Luncheon

➤ HAFA

- 8/12 – Back to School Fair



Community Partner Events

➤ Greater Milwaukee Urban League

- July – National Urban League Conference – Women of Power Luncheon
- August – Celebrate Black Business Month



➤ Urban League of Racine & Kenosha

- July – National Urban League Conference



CELEBRATE BLACK BUSINESS MONTH

Join Greater Milwaukee Urban League as we Celebrate Black Business Month!

Show your support and buy local from Milwaukee's Black Entrepreneurs.

Become a Greater Milwaukee Urban League's Entrepreneurship Connection Member—Meet the experts who will take your business to the next level.

Greater Milwaukee Urban League
435 W North Ave, Milwaukee, WI 53212
Phone: (414) 374-5850

Stay Connected to the Movement
TMUL.ORG

Greater Milwaukee Urban League | Empowering Communities. Changing Lives. | United Way



- Urban Economic Development Association (UEDA)
 - 6/27 – Emerging Topics



EMERGING TOPICS SERIES

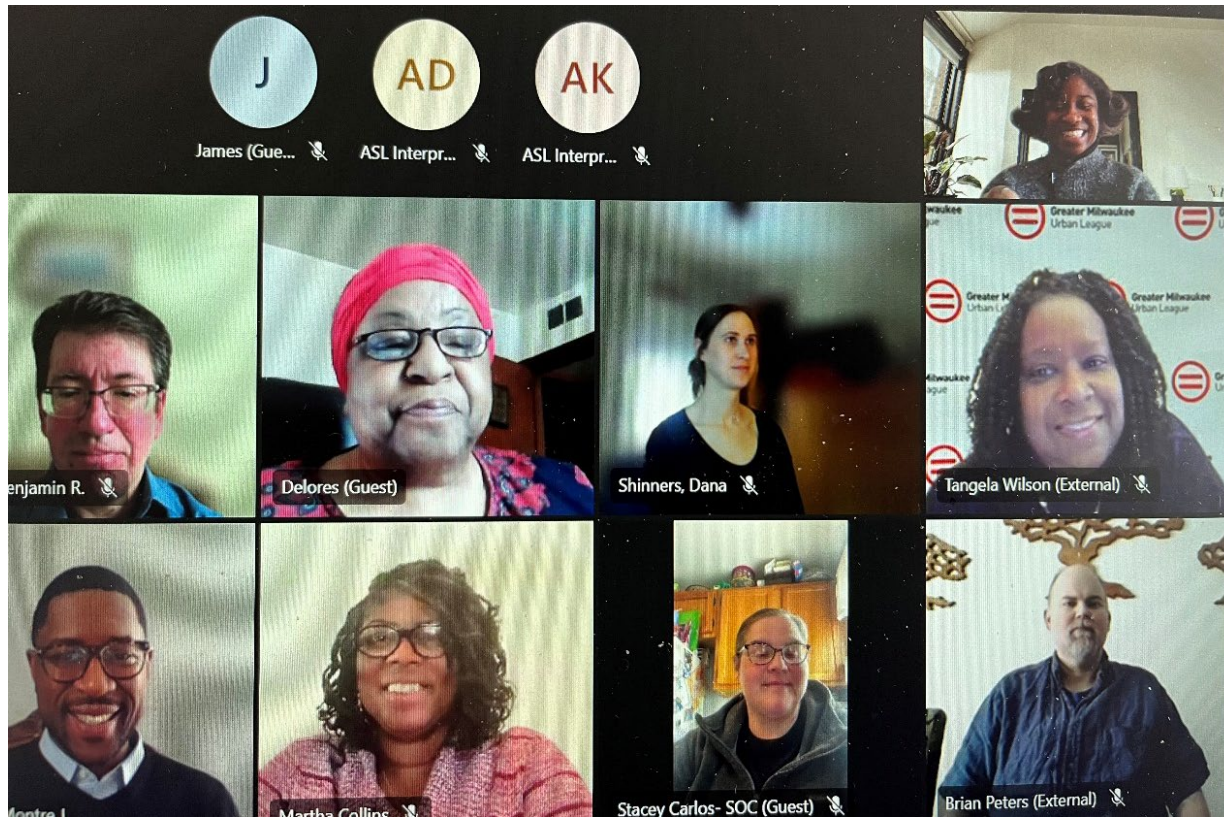
Neighborhood News Connect

June 27 | 11:30-1:30 PM (CST)
Bader Philanthropies | 3300 N. MLK Dr.



Community Partner Events

➤ The next Community Partner meeting will be held in person on November 2, 2023

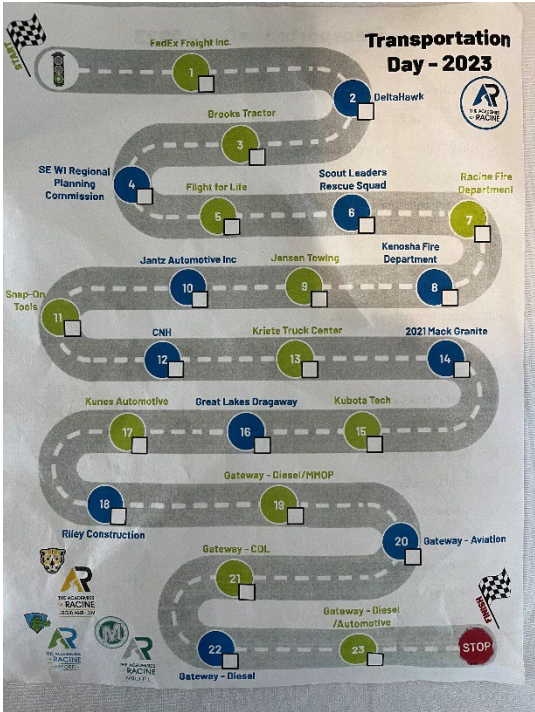


●●●●● Educational Outreach

- SEWRPC continues to engage youth in our Region to help them understand career opportunities in the planning, civil engineering, and environmental sciences fields
- If you know of any events or school programs that would benefit from SEWRPC staff presence, please let me know

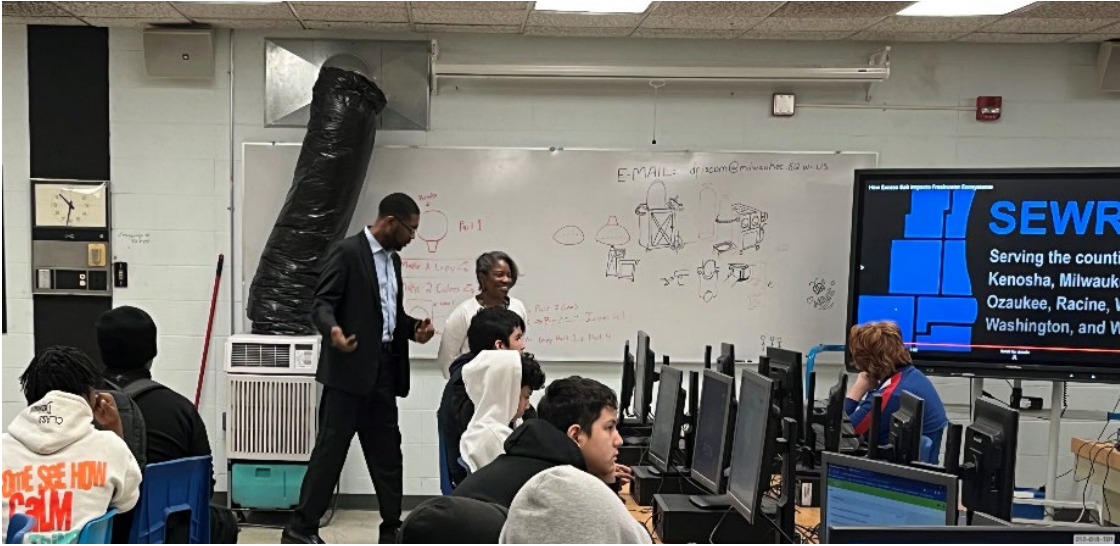


Gateway Transportation Day



May 2023





Bayview High School
May 2023





Educational Outreach – RUSD Academy Showcase



Park High School

Case High School

May 2023



EJTF

What else should PIO be doing?

