

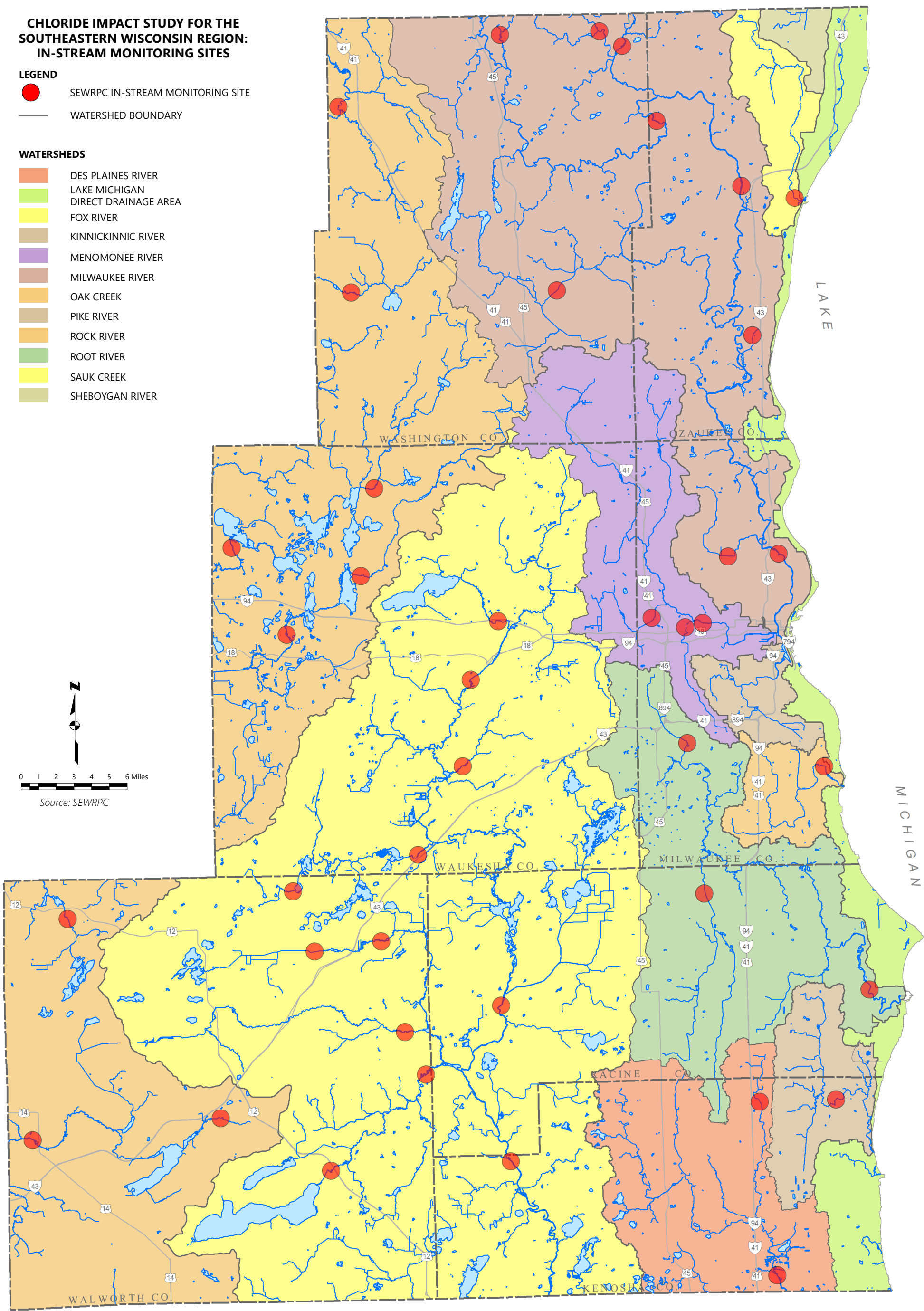
CHLORIDE IMPACT STUDY FOR THE SOUTHEASTERN WISCONSIN REGION: IN-STREAM MONITORING SITES

LEGEND

- SEWRPC IN-STREAM MONITORING SITE
- WATERSHED BOUNDARY

WATERSHEDS

- DES PLAINES RIVER
- LAKE MICHIGAN DIRECT DRAINAGE AREA
- FOX RIVER
- KINNICKINNIC RIVER
- MENOMONEE RIVER
- MILWAUKEE RIVER
- OAK CREEK
- PIKE RIVER
- ROCK RIVER
- ROOT RIVER
- SAUK CREEK
- SHEBOYGAN RIVER



Source: SEWRPC