

HISTORY & LOCATION

The Village of Sussex was incorporated in 1924 and has shown a strong and steady growth in its population and industry. Today, Sussex is home to businesses from “mom and pop” shops to international industries. The Downtown is home to a new civic center and mixed-use developments of apartments and retail. Sussex has an area of 8.2 square miles and is located in the northern part of Waukesha County near IH 94, about 20 miles west of Milwaukee.



VILLAGE OF SUSSEX

ECONOMIC PROFILE

DEMOGRAPHICS

Age Range:

0 to 19: 27.1%

20 to 44: 34.7%

45 to 64: 26.9%

65 and Older: 11.3%

Sussex Median Age: 37.5

Waukesha County Median Age: 43.2

White: 87.8%

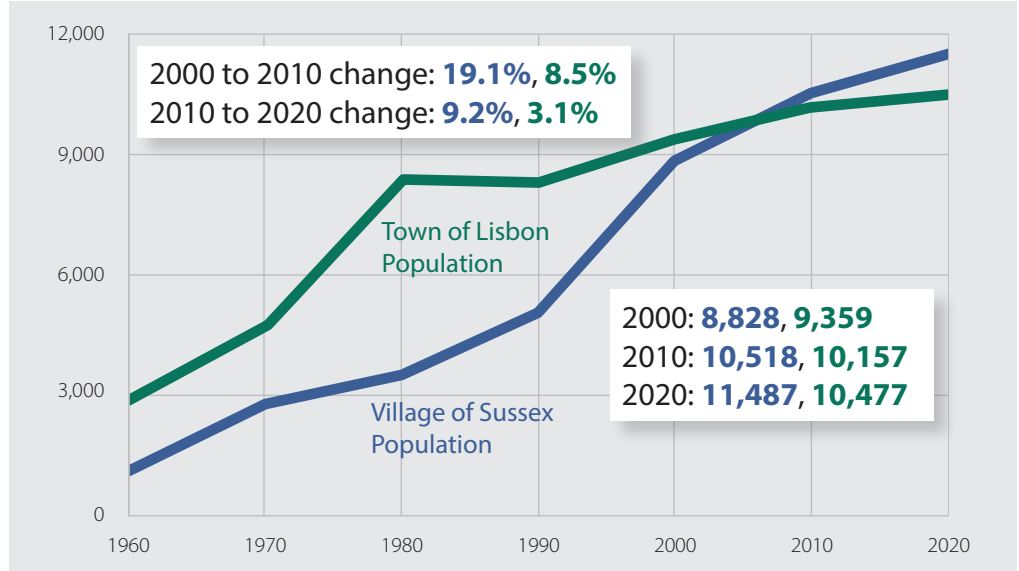
Black: 1.6%

Asian: 3.8%

Other Race: 3.3%

Hispanic: 3.5%

CENSUS POPULATION



HOUSING

Total Housing Units: 4,337

Owner Occupied Housing Units:

2,883 (68.8%)

Median Value: \$286,300

Renter Occupied Housing Units:

1,308 (31.2%)

Median Monthly Rent: \$987

MEDIAN ANNUAL HOUSEHOLD INCOME

Village of Sussex: \$91,387

Waukesha County: \$87,277

Southeastern Wisconsin: \$62,800

Wisconsin: \$61,747

United States: \$62,843

CONTACTS



Sussex Village Administrator

262-246-5200

Email: www.villagesussex.org



Waukesha County Center for Growth

262-409-2643

www.waukeshagrowth.org



Southeastern Wisconsin
Regional Planning Commission

262-547-6721

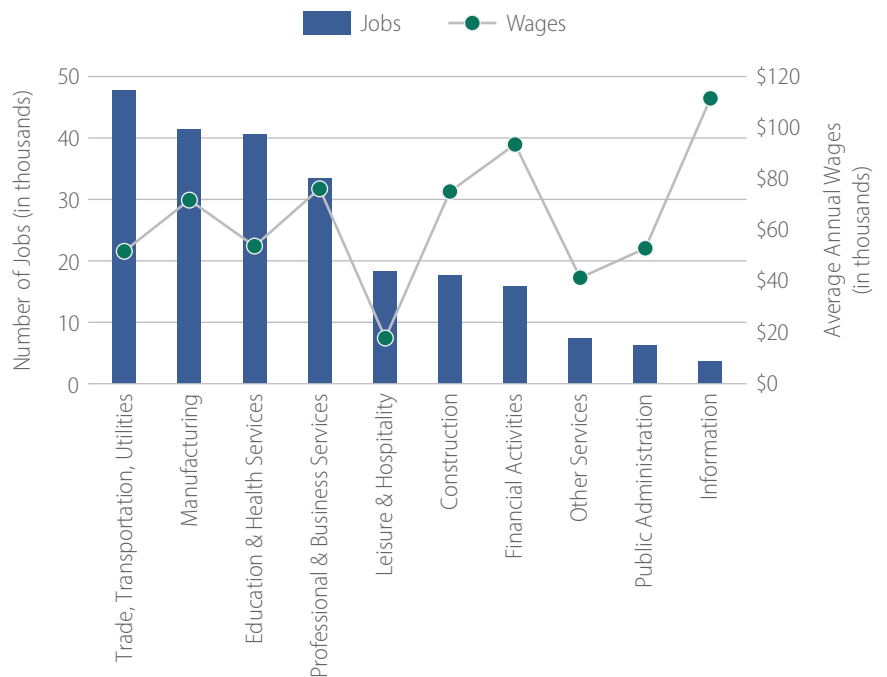
www.sewrpc.org

BUSINESS PARKS

There are four industrial/office parks located in the Village of Sussex covering about 500 acres. With 9 vacant parcels and an additional 76 acres to be developed, there is room to grow.

| Business Park Namez | Location | Size (acres) | No. of Vacant Parcels |
|-------------------------|---|--------------|-----------------------|
| Sussex Business Park | Southwest quadrant of Silver Spring Drive (CTH VV) and Townline Road | 71 | 1 |
| Sussex Corporate Center | Northeast quadrant of STH 164 and CTH K | 183 | 3 |
| Sussex Industrial Park | Southeast and Southwest quadrant of Main Street (CTH F) and Sussex Road south to Silver Spring Drive (CTH VV) | 90 | 0 |
| Highlands Business Park | Northwest quadrant of STH 164 and Lisbon Road (CTH K) | 146 | 5 |

WAUKESHA COUNTY JOBS BY INDUSTRY



LABOR FORCE

Residents in the Labor Force: 6,299
 Unemployment Rate: 2.6%*

RESIDENT OCCUPATIONS

Management, Business, Science, and Arts: 47.8%
 Natural Resources: 5.0%
 Production, Transportation, and Material Moving: 9.6%
 Sales and Office: 26.8%
 Services: 10.8%

MAJOR PRIVATE EMPLOYERS

The largest private employers in the Village are in the retail, manufacturing, and business and other services industry sectors.

Quad/Graphics (1,000 or more)
 Beer Capitol Distributing (250 - 499)
 Sussex IM (250 - 499)
 Sharp Packaging Systems (250 - 499)
 Meijer (250 - 499)

Amazon (250 - 499)
 Pick'n Save (100 - 249)
 Reinders (100 - 249)
 Color Ink (100 - 249)
 Kohl's (100 - 249)
 The Prestwick Group (50 - 99)

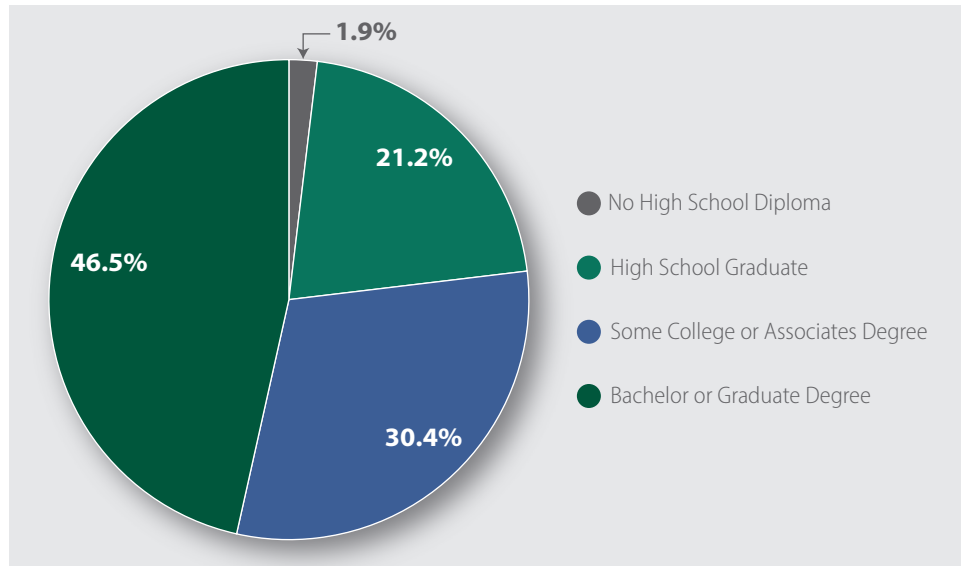
* Unemployment rate for Waukesha County as of March 2022.

EDUCATIONAL OPPORTUNITIES

The Hamilton School District serves Sussex with a multi-school campus. Students progress through two elementary schools divided by grade, a middle school, and a high school. The high school offers a STEM (science, technology, engineering and mathematics) program and training for Future Business Leaders of America. In addition, Sussex is served by a number of private schools and by the Sussex Public Library, which is a member of the Waukesha and Jefferson Counties Bridges Library System.

Numerous higher education opportunities are also available to Sussex residents in Waukesha County and in Milwaukee County. Waukesha County Technical College (WCTC) is located in nearby Pewaukee and offers associate degrees, technical diplomas, and short-term certificates. Carroll University, a private university offering undergraduate and graduate programs, and UWM at Waukesha—a two-year campus affiliated with UW-Milwaukee—are both located in the nearby City of Waukesha. In addition, Milwaukee County is home to

HIGHEST EDUCATIONAL ATTAINMENT



15 universities, including UW-Milwaukee, Marquette University, and the Milwaukee School of Engineering. Together, these universities offer a wide variety of undergraduate and graduate programs.

ACT SCORES

Hamilton School District/National

English 20.0/20.1
Math 22.2/20.4
Reading 21.6/21.2
Science 21.9/20.6
Composite 21.6/20.7

GOVERNMENT

The Village of Sussex is governed by a Village Board, consisting of a Village President and six trustees. The Village Board makes policy decisions and hires an Administrator to manage the operations of the Village. The Administrator is responsible to the Village Board for the efficient and effective delivery of services and implementation of the Village Board's policies. Sussex contracts with the Waukesha County Sheriff's Department for police services and operates a Fire Department with paid in-house paramedics 24/7.

PARKS

The Village has an extensive park system with tennis and pickleball courts, baseball, volleyball, disc golf, a splash pad, and miles of trails. The largest park—Village Park—is over 70 acres and hosts 5 major regional special events drawing crowds from throughout Southeastern Wisconsin every year.

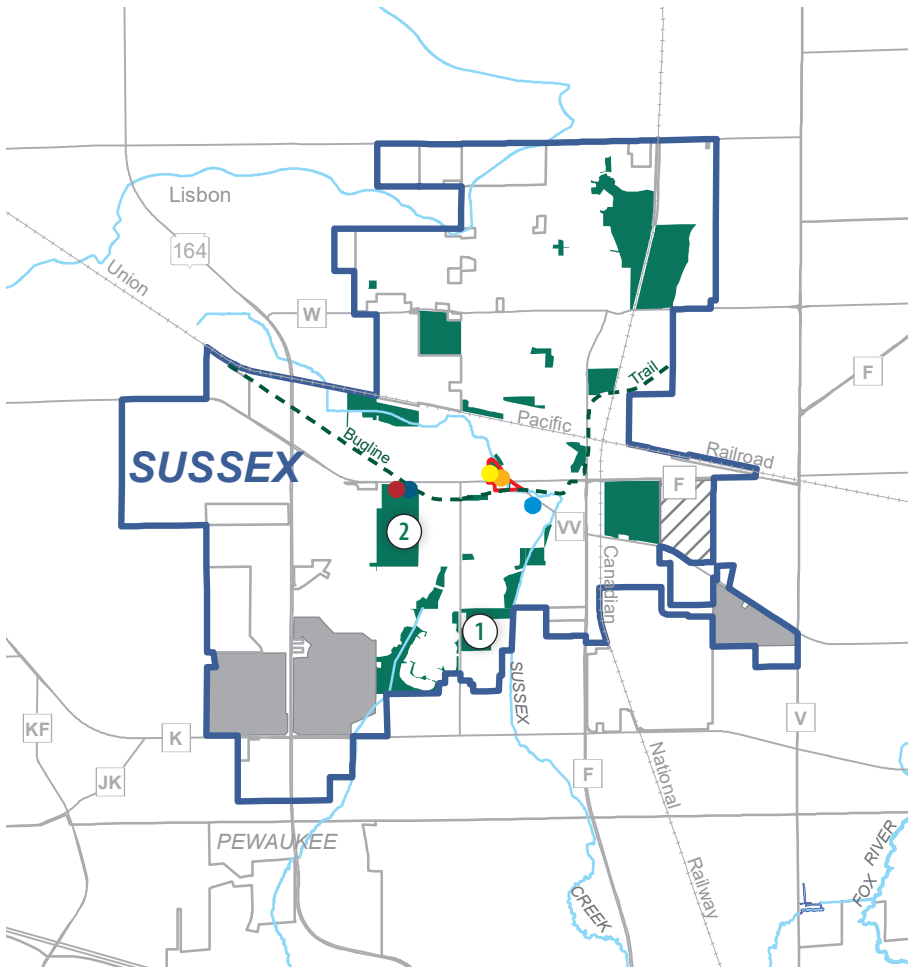
TAXES

Property tax: \$14.40 per \$1,000 of assessed value
Sales tax: 5.0%

HEALTHCARE

Sussex residents have access to hospitals in neighboring communities, including Waukesha, Menomonee Falls, and Pewaukee. Sussex is also served by numerous medical clinics and specialty care centers. In addition, the Milwaukee Regional Medical Center is located minutes away in neighboring Milwaukee County.

VILLAGE OF SUSSEX ECONOMIC PROFILE MAP: 2022



- Existing Business/Industrial Park (with Lots Available)
- Existing Business/Industrial Park (No Lots Available)
- Downtown Area
- Village Hall
- Post Office
- Police Station
- Fire Station
- Park and Open Space Sites
- Existing Bike Trail

PARKS

The Village of Sussex has 17 parks, including 2 community parks:

- ① Armory Park
- ② Village Park

www.villagesussex.org/services/parks-recreation-amenities/village-parks

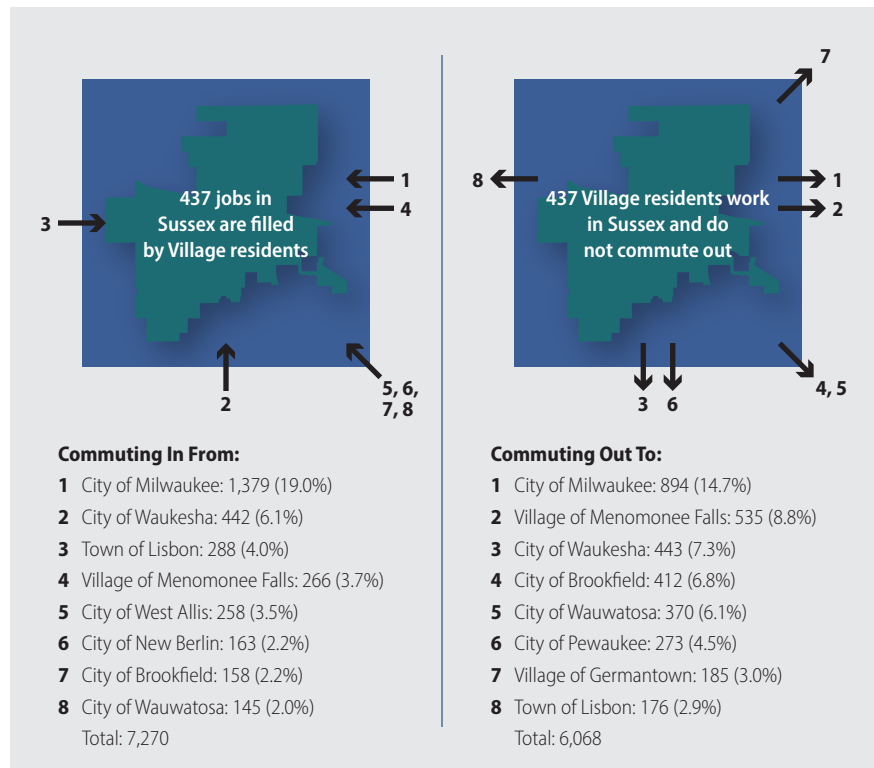
COMMUTING PATTERNS

TRANSIT

Waukesha County Transit—operated by Wisconsin Coach Lines—provides commuter bus service from nearby Pewaukee to downtown Milwaukee, where riders can connect to numerous destinations by bus, rail, and air. The service operates weekdays with limited intermediate stops.

TRAVEL TIMES

- To Downtown Milwaukee: 27 Minutes
- To Downtown Madison: 71 Minutes
- To Milwaukee Mitchell International Airport: 33 Minutes
- To Intermodal Station: 27 Minutes



Sources include: U.S. Census Bureau American Community Survey: 2015-2019, Wisconsin Departments of Public Instruction and Revenue, and SEWRPC