
A REGIONAL FOOD SYSTEM PLAN FOR SOUTHEASTERN WISCONSIN

Overview

October 2023



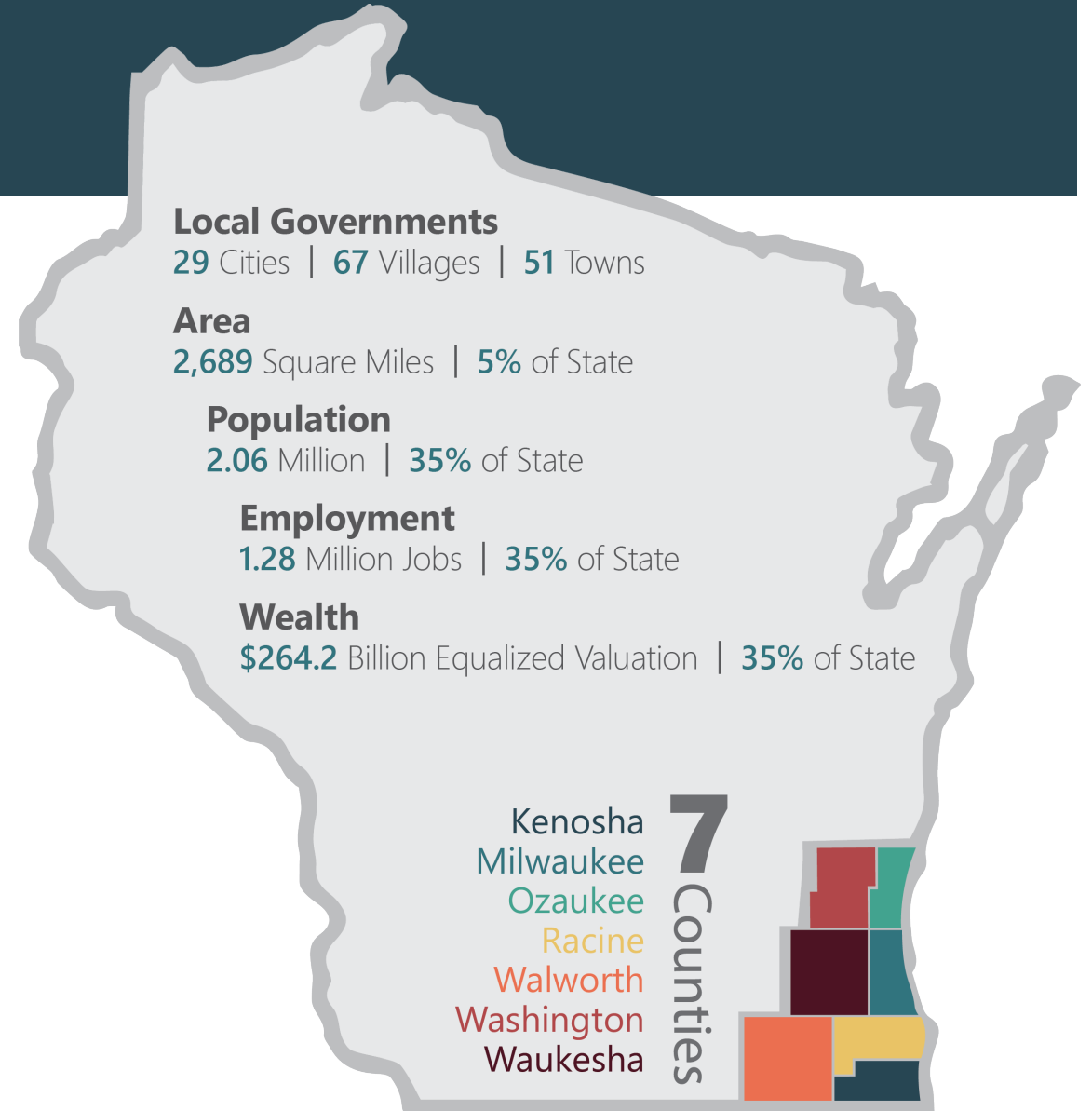


PROJECT OVERVIEW

- The Region
- Planning Process
- Report Outline
- What is a Food System?
- What is a Sustainable Food System?
- The Need for Food Systems Planning
- Project Purpose

THE REGION

- 3,521 Farms
- 739,840 acres of Farmland (1156 sq. miles)
- Total Market Value of Agricultural Products: \$604,186,000
- 52% Crops
- 48% Animal Products



PLANNING PROCESS

- Regional Food System Plan Advisory Committee
 - 30 members
 - Representatives from:
 - Organizations with specialized knowledge in the food system
 - County and local governments
- Environmental Justice Task Force
 - Enhance consideration and integration of environmental justice in regional planning process
 - Advises on outreach methods to people of color, low-income populations, and people with disabilities
- Public Outreach
 - Three rounds of public meeting at key points in the process
 - Outreach in the community



REPORT OUTLINE

- Chapter 1: Introduction
- Chapter 2: The Food System
- Chapter 3: Consumers
- Chapter 4: Environmental Stewardship
- Chapter 5: Recommendations
- Appendix: Case Studies & Glossary

WHAT IS A FOOD SYSTEM?

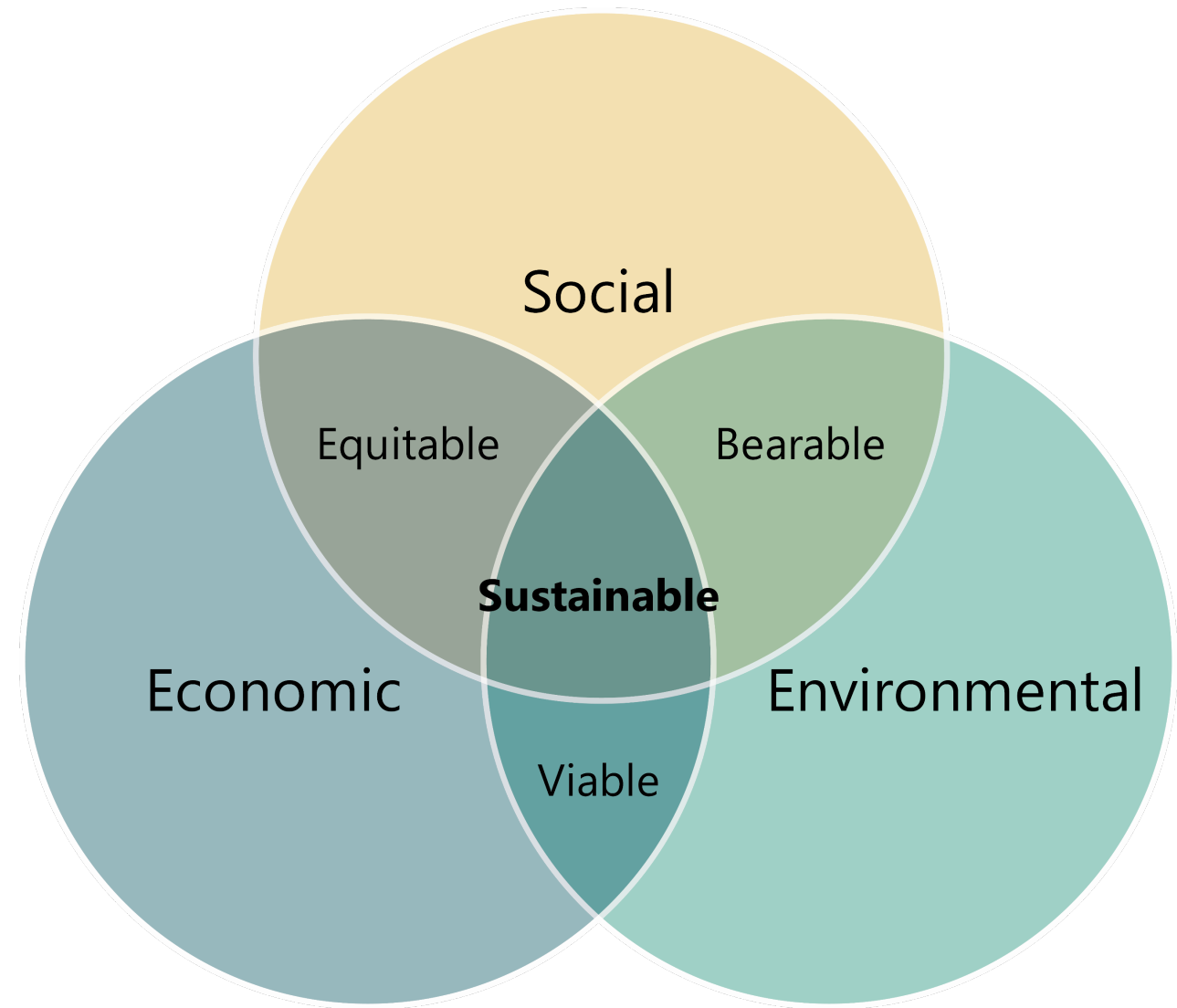
The food system includes every step your food takes from farm to fork:

- Production
- Processing & Manufacturing
- Distribution
- Point-of-Sale
- Consumption
- Food Waste



WHAT IS A SUSTAINABLE FOOD SYSTEM?

A *sustainable* food system ensures adequate nutrition for all in a way that protects economic, social, and environmental interests for the future.



Adapted from circularecology.com/sustainability-and-sustainable-development.html



FOOD SYSTEMS PLANNING

"The collaborative planning process of developing and implementing local and regional land use, economic development, public health, and environmental goals, programs, and policies . . . to enhance the overall public, social, ecological, and economic health of communities."

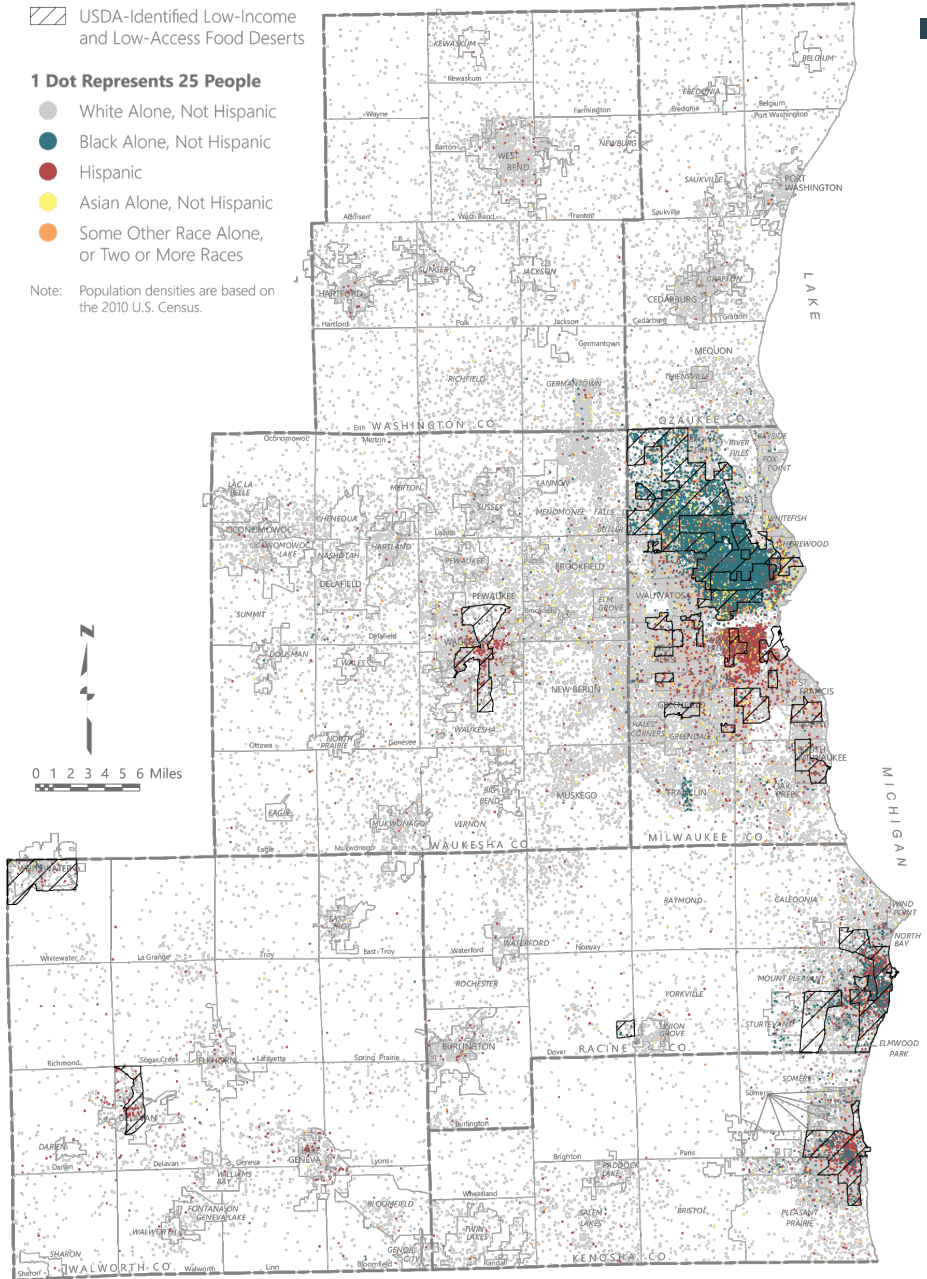
(American Planning Association)

▨ USDA-Identified Low-Income and Low-Access Food Deserts

1 Dot Represents 25 People

- White Alone, Not Hispanic
- Black Alone, Not Hispanic
- Hispanic
- Asian Alone, Not Hispanic
- Some Other Race Alone, or Two or More Races

Note: Population densities are based on the 2010 U.S. Census.



THE NEED FOR REGIONAL FOOD SYSTEM PLANNING

- The RFSP was one of the recommendations in VISION 2050
 - Need to Make Healthy Foods Accessible in All Areas of the Region
 - Urban Centers and Agricultural Resources
 - RFSP a Step in Supporting the Regional Food System

PROJECT PURPOSE

- To connect food system stakeholders (e.g., producers, distributors, consumers)
- To improve access to affordable, healthy, fresh, and desirable food options for all residents.
- To address long-standing economic and health disparities.
- To support locally owned and sustainable farms.
- To preserve productive agricultural land and natural resources.
- To increase educational efforts on nutrition and food literacy.



Regional
Food System
Plan



Thank You

Please reach out with any questions,
comments, or insights!

Ben McKay | Deputy Director | bmckay@sewrpc.org

Miranda Page | Planner | mpage@sewrpc.org

For more information on the plan, visit:
www.sewrpc.org/RFSP



SEWRPC.ORG

